



**COVID-19 Question and Answer Session  
for Long-Term Care and Congregate Residential Settings**

August 19th, 2020

# Housekeeping

- All attendees in listen-only mode
- Submit questions via Q&A pod to **All Panelists**
- Slides and recording will be made available later

# Agenda

- Upcoming webinars
- Region 4: Tiered mitigation
- LTC testing flowchart
- FAQ from last week
- Open Q & A

Slides and recording will be made available after the session.

# IDPH webinars

## Friday Brief Updates and Open Q&A (1-2 pm):

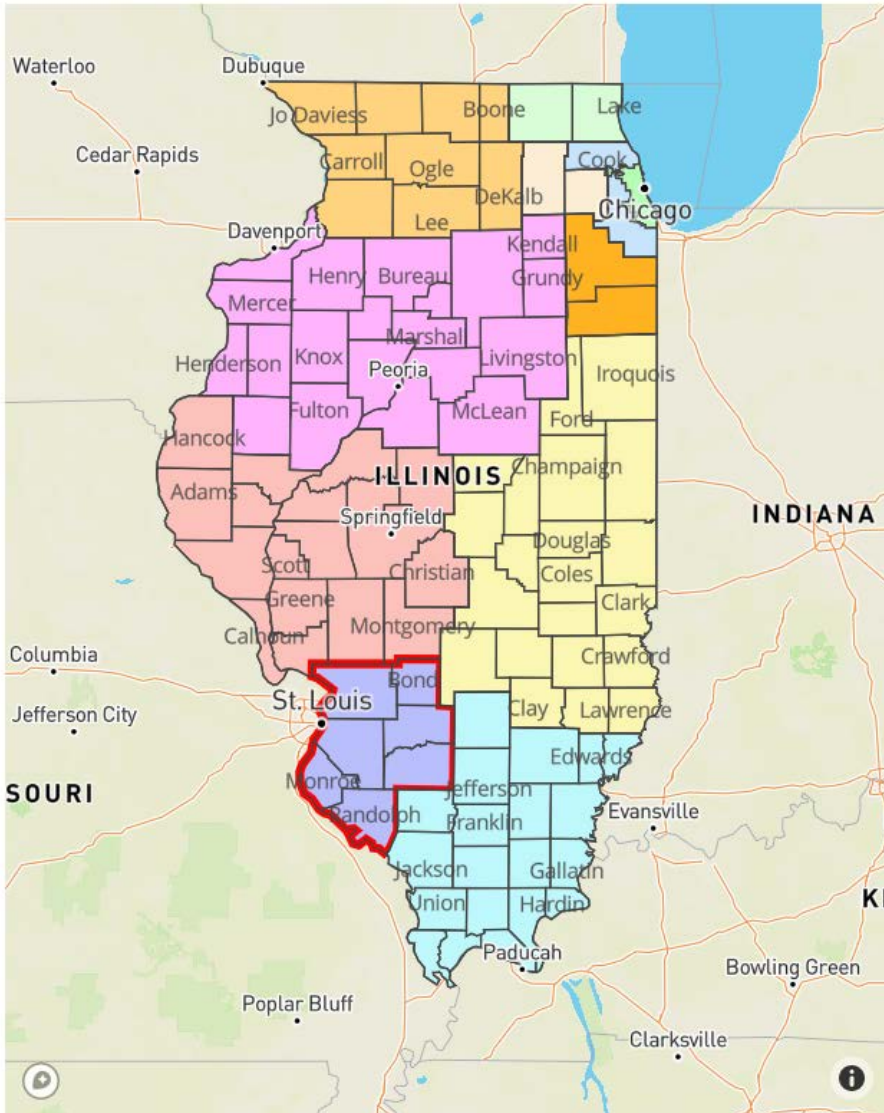
Friday, August 28	<a href="https://illinois.webex.com/illinois/onstage/g.php?MTID=ec7830c54e232b98b51c7712eb567d015">https://illinois.webex.com/illinois/onstage/g.php?MTID=ec7830c54e232b98b51c7712eb567d015</a>
-------------------	---

Slides and recordings will be made available after the sessions.

## Reopening Long-Term Care: Interim Guidance from IDPH (Recording):

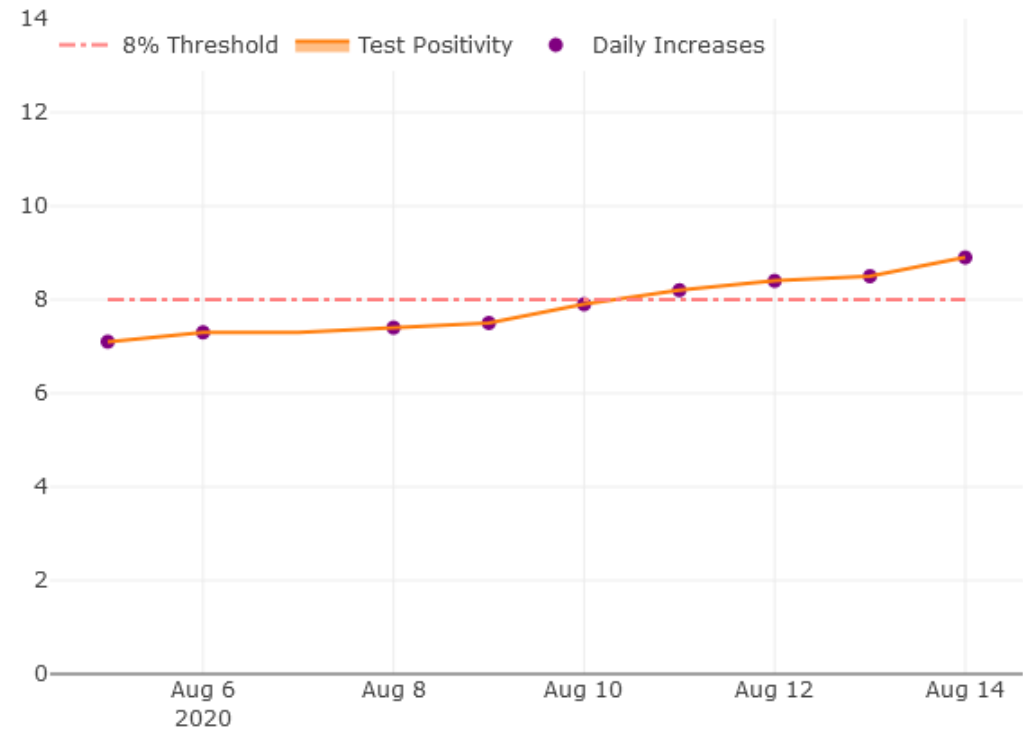
Tuesday, August 11	<a href="https://illinois.webex.com/illinois/lsr.php?RCID=aa4686fa239142b58e0313adff7551fd">https://illinois.webex.com/illinois/lsr.php?RCID=aa4686fa239142b58e0313adff7551fd</a>
Thursday, August 13	<a href="https://illinois.webex.com/illinois/lsr.php?RCID=94e78fd2dfdd46d1ad1e7fe0ad3162cc">https://illinois.webex.com/illinois/lsr.php?RCID=94e78fd2dfdd46d1ad1e7fe0ad3162cc</a>

# Region 4 Resurgence



### Test Positivity 7 Day Rolling Average

9 Days of Positivity Increases



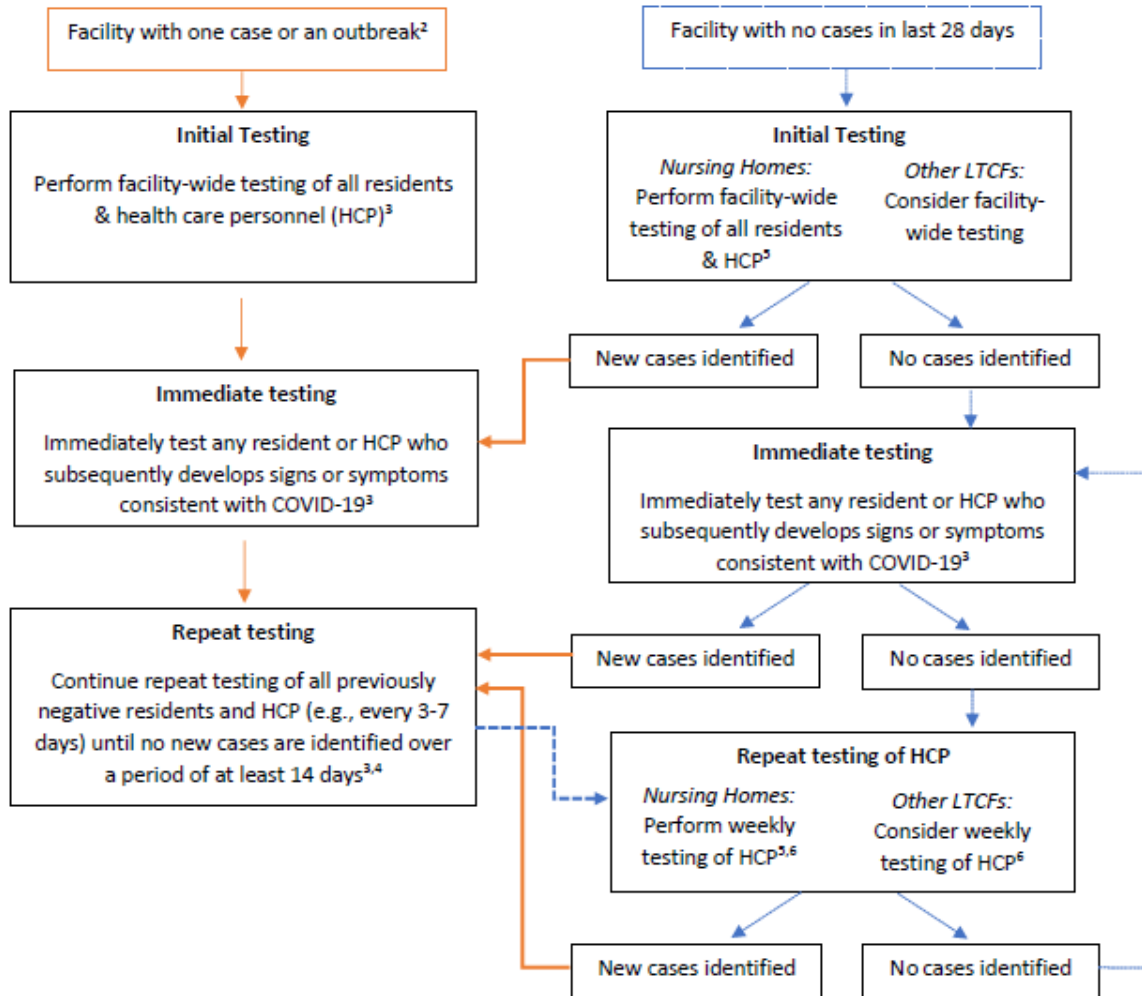
Follow the latest regional metrics at: <https://dph.illinois.gov/regionmetrics>



# Region 4: Tier 1 Mitigation Measures

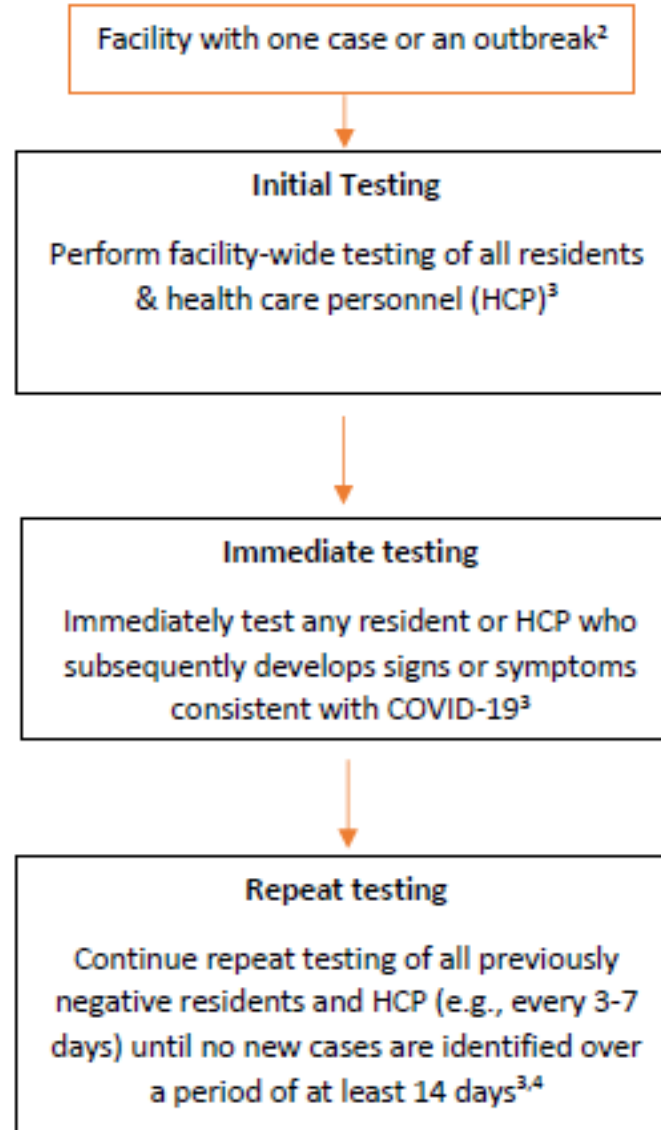
- LTC facilities in Region 4 that have already advanced to CMS Phase 3 must suspend indoor visitation and off-site outings
  - Indoor visitation and off-site outings can be resumed 14 days after tiered mitigation for the region is lifted
  - Outdoor visitation may continue
- LTC facilities in Region 4 that have not yet advanced to CMS Phase 3 are not eligible to advance to CMS Phase 3 until 14 days after tiered mitigation in the region is lifted
  - Any plans to begin indoor visitation and off-site outings in association with phase advancement must be postponed until that time
  - Outdoor visitation may continue
- Please direct any further questions to [dph.ltcreopening@illinois.gov](mailto:dph.ltcreopening@illinois.gov)

# LTCF Testing Flowchart



- Organizes testing requirements or recommendations by outbreak status
- May be updated as new CDC/CMS guidance is released or new testing initiatives come online
- Available on IDPH [website](#) now, but planned to be sent out via SIREN with updated testing memo

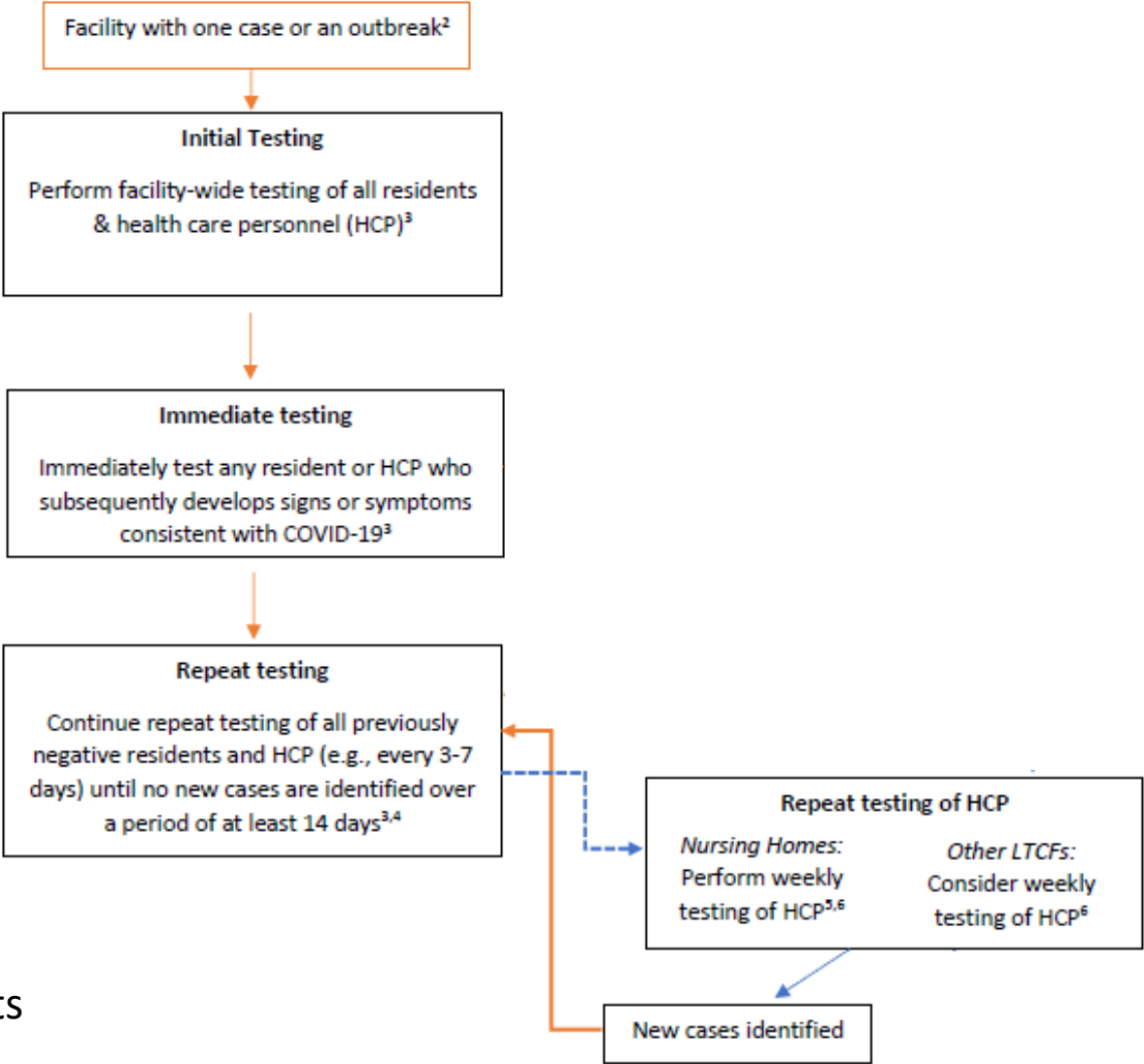
# LTCF testing – outbreak or one case



<sup>4</sup> Some local health departments may choose to extend the period of testing to at least 28 days of no new cases.

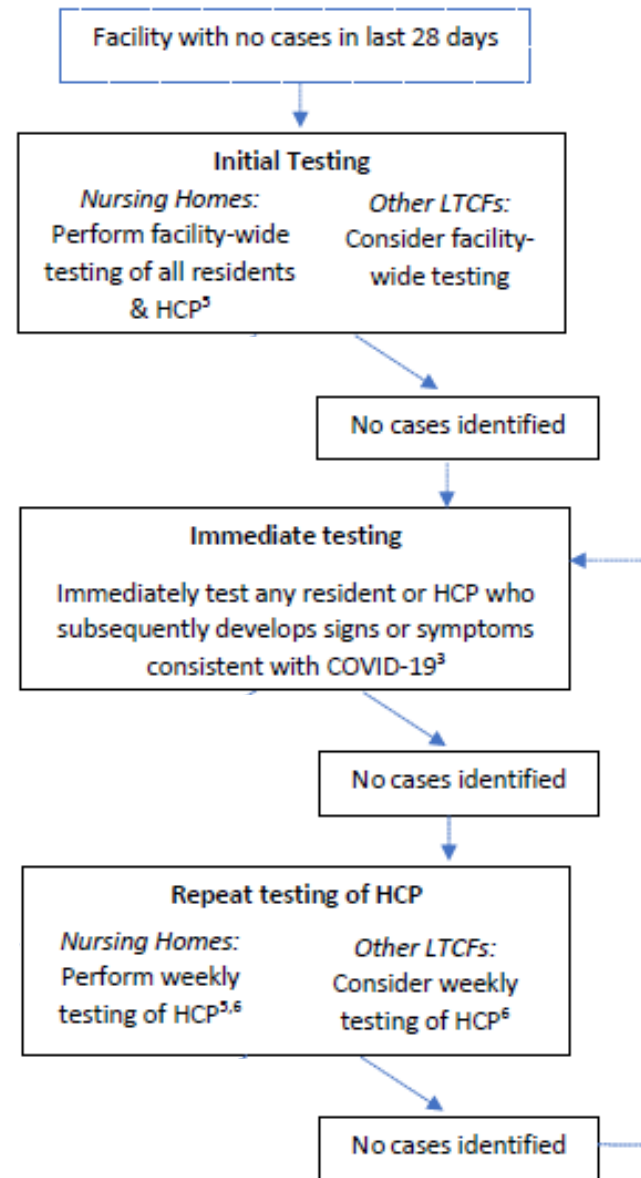


# LTCF testing – outbreak or one case

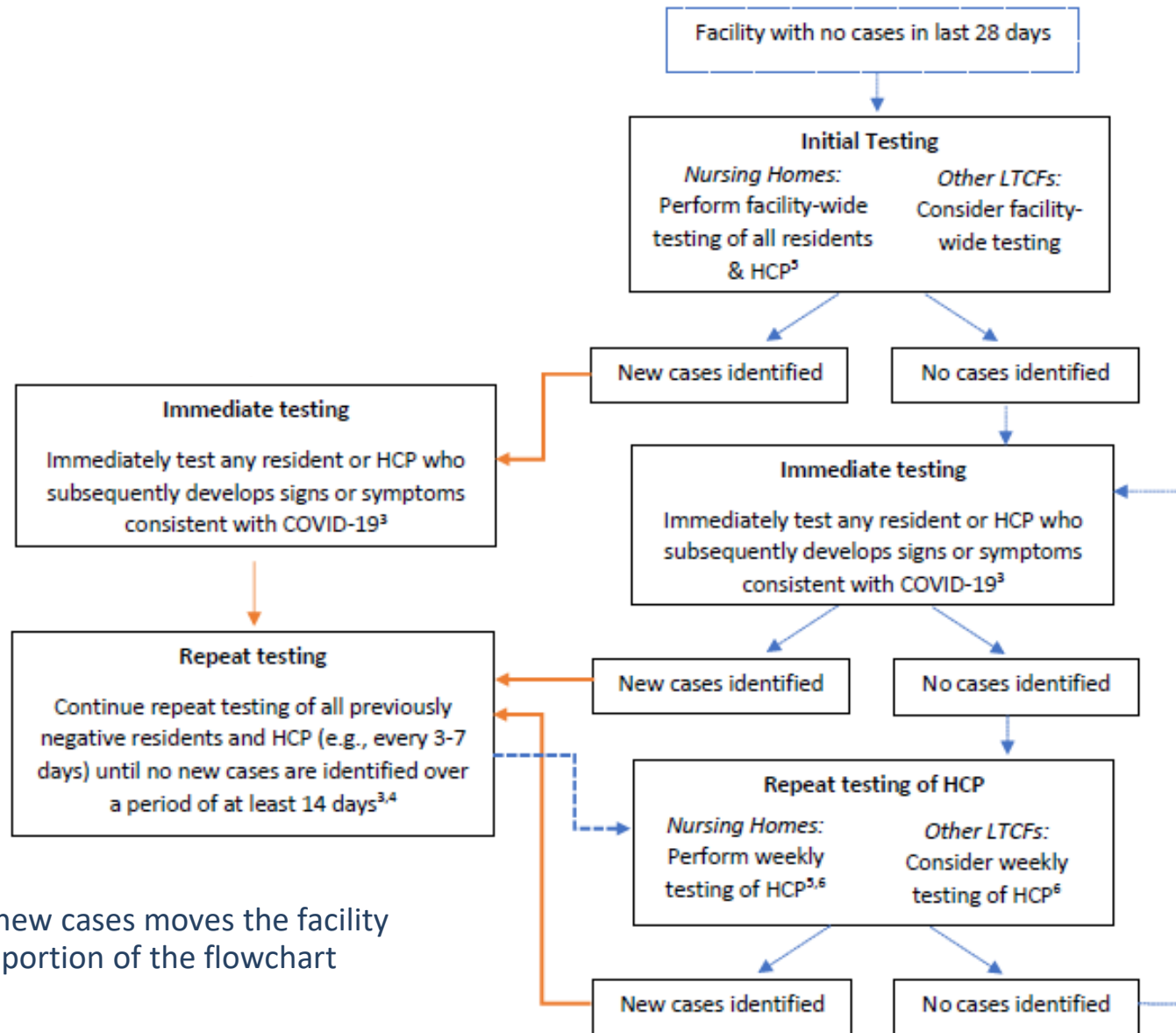


<sup>6</sup> Facilities may also consider conducting periodic follow-up facility-wide testing of residents to identify asymptomatic and subclinical infections.

# LTCF testing – no cases in last 28 days



# LTCF testing – no cases in last 28 days



Identification of any new cases moves the facility over to the outbreak portion of the flowchart (orange arrows)

# FAQ from last week

- Q:Are N95s required or just recommended? We cannot locate a company to assist with fit testing.
- Q:If we are considered in Phase 2 can we attest to Phase 3 at this time?
- Q: If there is a facility acquired resident positive does outdoor visitation stop for all residents

# Open Q&A

Submit questions via Q&A pod to **All Panelists**

Slides and recording will be made available after the session.

# Reminders

- SIREN Registration
  - To receive situational awareness from IDPH, please use this link to guide you to the correct registration instructions for your public health related classification: <http://www.dph.illinois.gov/siren>
- NHSN Data Assistance
  - Contact Telligen: **nursinghome@telligen.com**