

A background image of a sparkler with bright orange and yellow sparks against a dark blue background. The sparks are concentrated on the right side of the image, with some trailing off towards the left. The overall effect is celebratory and dynamic.


IL COVID-19 Vaccination Plan Phase 1a Priorities

Long-term Care Update
January 8, 2021

- Language from ACIP
- IDPH clarifications

Vaccination Phase 1a

Healthcare workers, as well as residents and personnel in long-term congregate care facilities where high rates of transmission and outbreaks can occur (1/2)



Type	 Hospitals setting	 Non-hospital healthcare
Eligible setting	<ul style="list-style-type: none"> • Hospitals 	<ul style="list-style-type: none"> • Medical Outpatient • Public Health Clinics • LHD Points of Distribution (POD's) • Federally Qualified Health Center
Eligible personnel	<ul style="list-style-type: none"> • Nurses and Nursing Assistants • Physicians / MD, NP, PA • Respiratory Technicians • Pharmacists • Environmental Services Staff • Phlebotomist • Infectious Waste Workers • COVID Sample Lab • Organ Harvester • Students on Clinical Rotations • Dietary staff • Clergy/pastoral/chaplains 	<ul style="list-style-type: none"> • Interpreters • Crisis intervention staff • Laundry or security staff • Reception Staff • Emergency Medical Services (EMS) • Fire Department Staff acting as EMS • Air Medical Transport (Rotor & Fixed Wing) • X-Ray Technician
Vaccine delivery	<ul style="list-style-type: none"> • Direct Shipment to the provider or through the LHD via a centralized push from the SNS-RSS 	<ul style="list-style-type: none"> • Nurses and Nursing Assistants • Physicians / MD, NP, PA • Respiratory Technicians • Dentists and Hygienists • Pharmacists • Plasma and Blood Donation Staff • Morticians • Public Health Nurses • Home Health • School Nurses • Optometrist

Note: Residential programs inclusive of licensed programs as well as those within the Williams Colbert Consent Decree.

Vaccination Phase 1a

Healthcare workers, as well as residents and personnel in long-term congregate care facilities where high rates of transmission and outbreaks can occur (2/2)

- Language from ACIP
- IDPH clarifications

Type	 Long term care facilities	 Other congregate care
Eligible setting	<ul style="list-style-type: none"> • Skilled nursing facilities • Assisted living facilities • Intermediate care facilities for persons w/developmental disability • Intermediate care facility for persons w/severe mental illness • State-run veterans' homes • State Operated Center for the Developmentally Disabled • State Operated Mental Health Centers • Residential treatment for substance use 	<ul style="list-style-type: none"> • Continuing care residential • Residential care adult homes • Supportive housing for seniors • Supportive residential for persons w/developmental disability • Supportive residential for persons w/severe mental illness • Community Integrated Living Arrangement • Supervised residential for persons w/developmental disability • Supervised residential for persons w/severe mental illness
Eligible personnel	<ul style="list-style-type: none"> • Nurses and Nursing Assistants • Physicians / MD, NP, PA • Respiratory Technicians • Dentists and Hygienists • Long-Term Care Facility Staff • Pharmacists • Mental health clinicians • Environmental Services Staff • Reception Staff • Medical Facility Surveyor • Dietary staff • Interpreters • Laundry or security staff 	<ul style="list-style-type: none"> • Nurses and Nursing Assistants • Physicians / MD, NP, PA • Respiratory Technicians • Group Home/Residential Staff • Pharmacists • Environmental Services Staff • Reception Staff • Home Aide/Caregiver • Corrections nurses/assistants • Congregate Care Surveyor • Hospice/palliative care staff • Community health workers when acting as health aid or health translator
Eligible residents	<ul style="list-style-type: none"> • All residents of eligible settings detailed above 	<ul style="list-style-type: none"> • All residents of eligible settings detailed above
Vaccine delivery	<ul style="list-style-type: none"> • Pharmacy Partnership Program (PPP) and facilities self administration 	<ul style="list-style-type: none"> • Local providers and local clinics and facilities self administration

Note: Residential programs inclusive of licensed programs as well as those within the Williams Colbert Consent Decree.

IDPH Long-term Care COVID-19 Response

January 8, 2021

Current Status

- LTC COVID-19 cases have leveled off, may be seeing a decline
- LTC cases are 5% of all cases, 12% of hospitalizations.
- Implemented infection control and testing measures are making a difference – need vigilance.

Required COVID-19 Infection Prevention Training – Emergency Rule

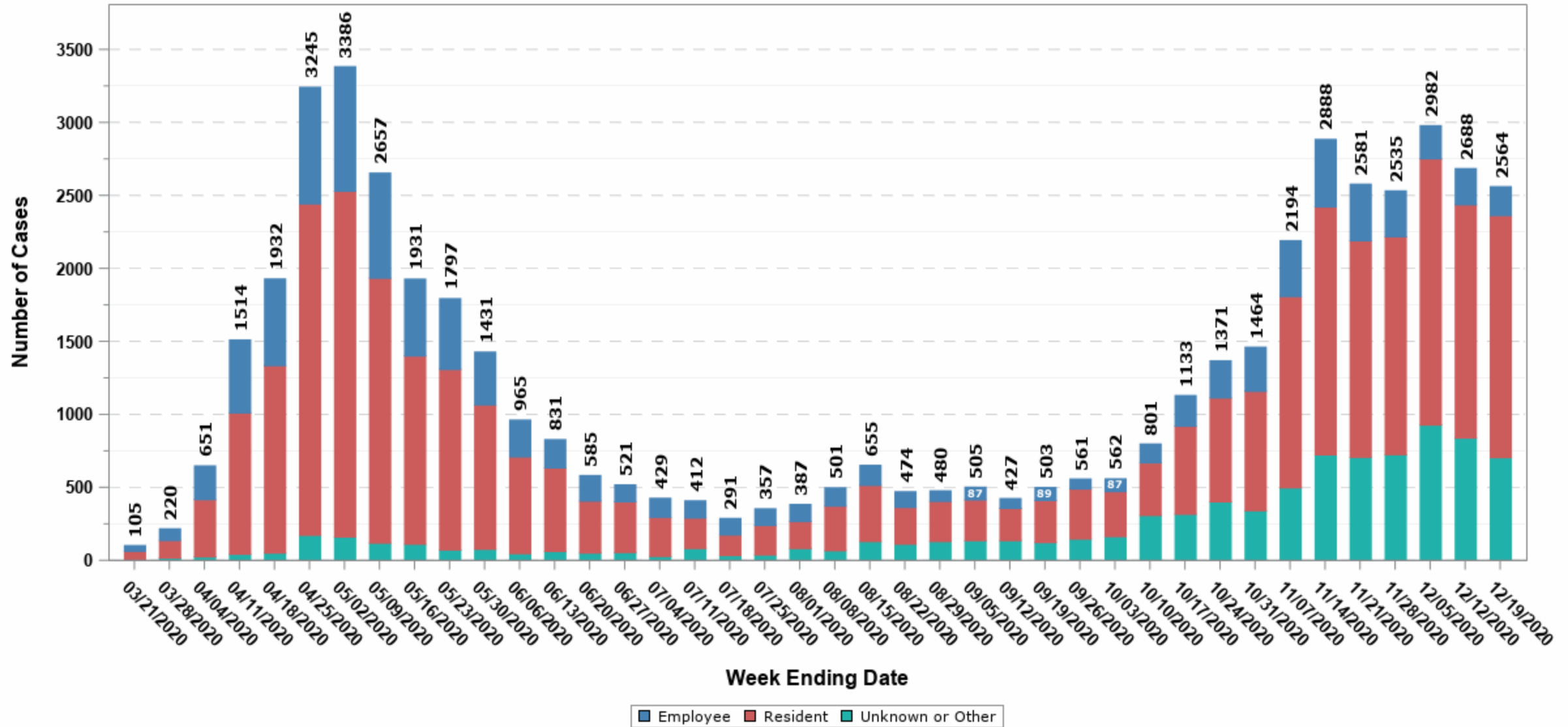
- 77 IAC 295, 300, 330, 340, 350, 370, 380, and 390 were adopted in the 1/4/2021 Illinois Register
- Requires targeted COVID-19 infection prevention training - all frontline clinical/management staff
- 50% by 1/31/21, 100% by 2/28/31

Update on CDC LTC Pharmacy Partnership Program for COVID-19 Vaccinations

- Well underway!

Long-term Care Facility* COVID-19 Cases**, by Week

15 March 2020 through 19 December 2020



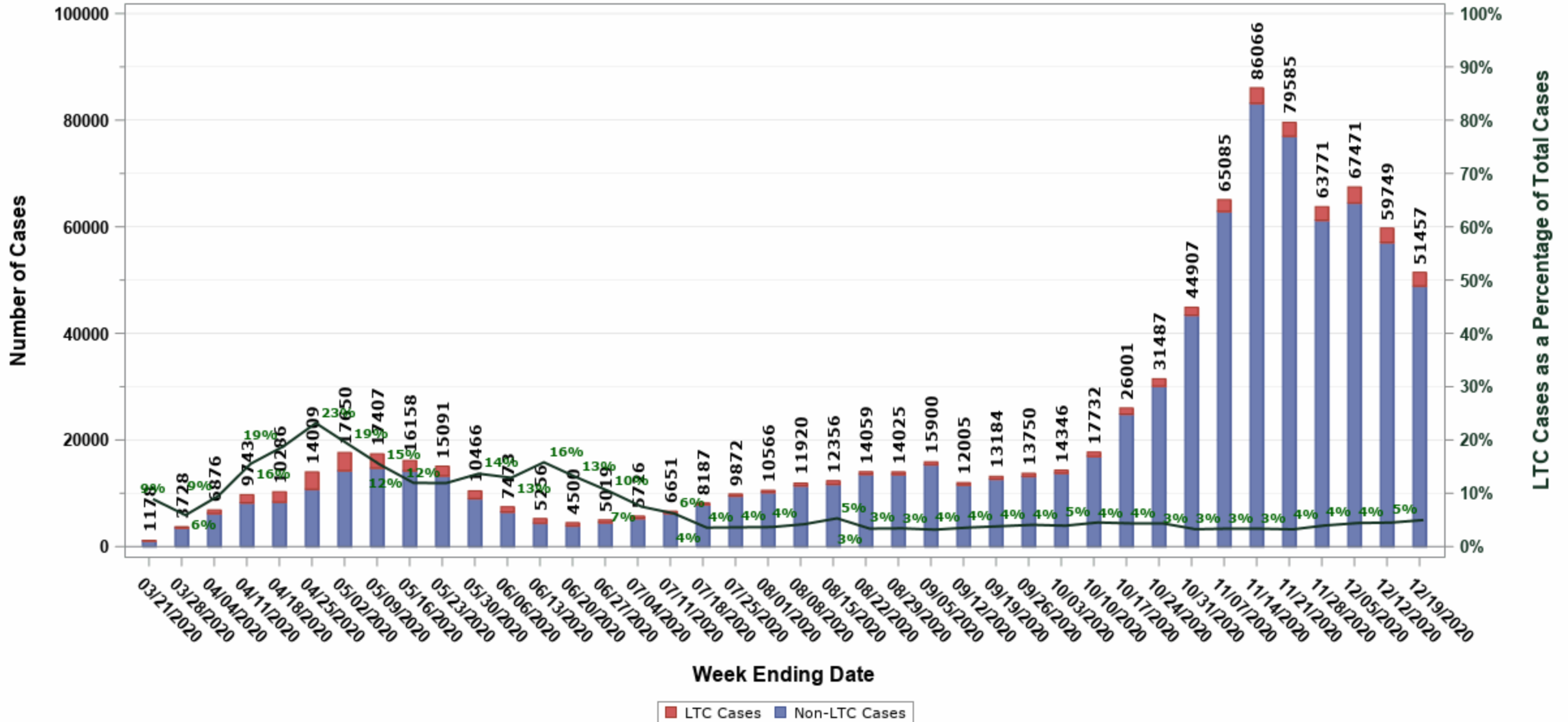
*Facility Type Limited to Skilled Nursing and Assisted Living Categories

**Counts based on case-reported date

CAUTION: Upper limit of y-axis scale may differ among slides depending on what is being measured (e.g., cases vs. hospitalizations vs. deaths), geographic scope, and/or date range

Long-term Care Facility* Percent of Total COVID-19 Cases**, by Week

15 March 2020 through 19 December 2020



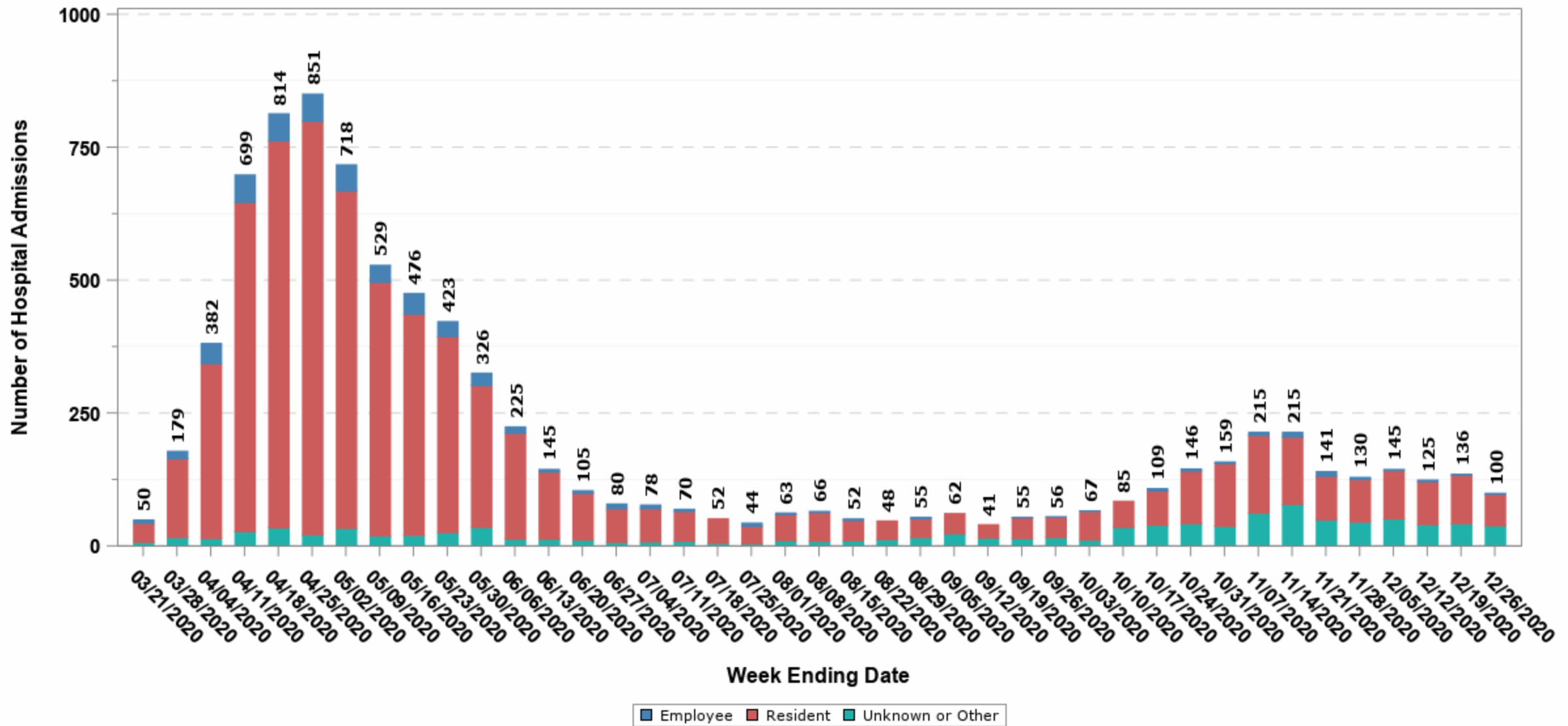
*Facility Type Limited to Skilled Nursing and Assisted Living Categories

**Counts based on case-reported date

CAUTION: Upper limit of y-axis scale may differ among slides depending on what is being measured (e.g., cases vs. hospitalizations vs. deaths), geographic scope, and/or date range

Long-term Care Facility* COVID-19 Hospital Admissions**, by Week

15 March 2020 through 26 December 2020



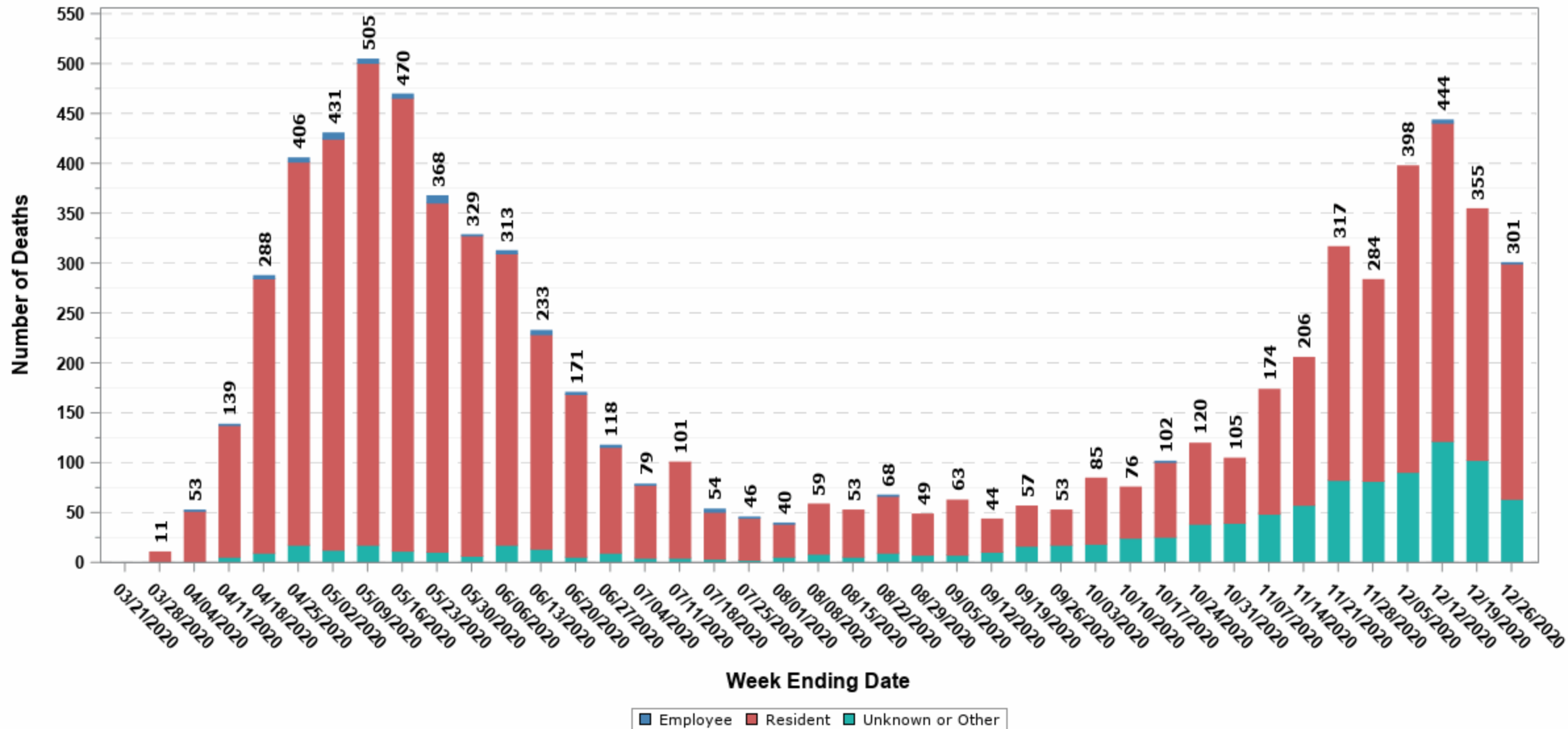
*Facility Type Limited to Skilled Nursing and Assisted Living Categories

**Counts based on reported hospital admissions

CAUTION: Upper limit of y-axis scale may differ among slides depending on what is being measured (e.g., cases vs. hospitalizations vs. deaths), geographic scope, and/or date range

Long-term Care Facility* COVID-19 Deaths**, by Week

15 March 2020 through 26 December 2020



*Facility Type Limited to Skilled Nursing and Assisted Living Categories

**Counts based on death-reported date

CAUTION: Upper limit of y-axis scale may differ among slides depending on what is being measured (e.g., cases vs. hospitalizations vs. deaths), geographic scope, and/or date range

CDC LTC Pharmacy Partnership Program for COVID-19 Vaccination



Pharmacy Partner Responsibilities

(at no charge to facility)

- Schedule and coordinate on-site clinic dates directly with each facility
- Order vaccines and associated supplies
- Ensure cold chain management for vaccine
- Provide on-site administration of vaccine to all residents and any staff not already vaccinated
- Report required vaccination data to the local, state/territorial, and federal jurisdictions within 72 hours of administering each dose
- Adhere to all applicable CMS COVID-19 testing requirements for LTCF staff

Illinois Roll-out of CDC LTC PPP

- Began week of December 28
- Using Pfizer vaccine from the Illinois allocation
- 99% of LTCs are enrolled, 1,700 facilities
- Short list of LTC not enrolled sent to LHDs
- 1st focus - Skilled Nursing Facilities
- Remainder of program to begin soon -
- Will report LTC clinics weekly to LHDs after completion

Initial/provisional reporting to be confirmed

COVID SNFs First Dose vaccination update: January 8th

Program open to Skilled Nursing Facilities (SNFs) only as of now; Tiberius facility data lagging

Facility status

Excluding Chicago

Status	# of facilities	% of SNFs
SNFs visited and reporting	170+	27%+
Total SNFs	629	100%

*See table below
for details*

Coverage and reach at SNFs vaccinated and reporting

Excluding Chicago

Group	# Vaccinated
Residents	11,882
Staff	10,048
Total	21,930

*Note: Some facilities will
require multiple 1st dose visits*

Emergency Rule Required COVID-19 IP Training Applies to all Long-term Care Facilities

- Part 295: Assisted Living and Shared Housing Establishment
- Part 300: Skilled Nursing and Intermediate Care Facilities Code
- Part 330: Sheltered Care Facilities Code
- Part 340: Illinois Veterans' Home Code
- Part 350: Intermediate Care for Developmentally Disabled
- Part 370: Community Living Facilities
- Part 380: Specialized Mental Health Rehabilitation Facilities
- Part 390: LTC for under age 22 years

LTC COVID-19 Emergency Training Rules

Effective December 18, 2020

- Requires COVID-19 training for frontline clinical & management staff
- Free training from Centers for Medicare & Medicaid Services, topics:
 - Infection control
 - PPE
 - Disinfection
 - Screening
 - Surveillance
 - Cohorting
 - Special care for Individuals with Dementia
- 5 frontline clinical staff modules + 5 additional for management
- 50% of frontline and management staff complete by 01/31/21
- 100% complete by 02/28/21
- New staff hired after 01/31/21 complete within 14 days of hire

LTC COVID-19 BEST PRACTICES

1. Test staff regularly, using rapid-results testing;
2. Test residents once a case is detected;
3. Serial testing of staff and residents during outbreaks;
4. Separate COVID-positive from COVID-negative residents, with dedicated staff;
5. Ensure staff use of appropriate personal protective equipment (PPE); and
6. Employ standard sanitation procedures.
- 7. Get Vaccinated!**