

# PREADMISSION SCREENING AND ANNUAL RESIDENT REVIEW (PASARR)

Interdisciplinary Team Training

*LeadingAge*<sup>®</sup>



**PATHWAY  
HEALTH**  
Insight | Expertise | Knowledge

# PASARR

## Objectives

- Obtain a basic understanding of the updates related to the preadmission screening and annual resident review requirements
- Review the PASARR Policy



This document is for general informational purposes only.  
It does not represent legal advice nor relied upon as supporting documentation or advice with CMS or other regulatory entities.  
© Pathway Health Services, Inc. – All Rights Reserved – Copy with Permission Only - Requirements of Participation P&P Manual 2017



# Introduction

- The nursing home Requirements of Participation (RoP) are the regulations that set minimum standards for nursing homes.
- The RoP were rewritten in October 2016.
- The changes in regulations go into effect over the next three years, in phases.



# Overview of the Regulation

- **§ 483.20 (e) Coordination**
- A facility must coordinate assessments with the preadmission screening and resident review (PASARR) program under Medicaid in subpart C the maximum extent practicable to avoid duplicative testing and effort.



# Overview of the Regulation

- **§ 483.20 (e) Coordination**
- Coordination includes—(1) Incorporating the recommendations from the PASARR level II determination and the PASARR evaluation report into a resident's assessment, care planning, and transitions of care.



# Overview of the Regulation

- **§ 483.20 (e) Coordination**
- Referring all level II residents and all residents with newly evident or possible serious mental disorder, intellectual disability, or a related condition for level II resident review upon a significant change in status assessment.



# Overview of the Regulation

- (k) *Preadmission screening for individuals with a mental disorder and individuals with intellectual disability.*
- (1) A nursing facility must not admit, on or after January 1, 1989, any new resident with—
  - **Mental disorder** as unless the State mental health authority has determined, based on an independent physical and



# Overview of the Regulation

- **Intellectual disability** -unless the State intellectual disability or developmental disability authority has determined prior to admission...
- Exceptions
  - *Related to readmissions*
  - *Direct from hospital*
  - *Physician Certified*



**PATHWAY  
HEALTH**  
Insight | Expertise | Knowledge

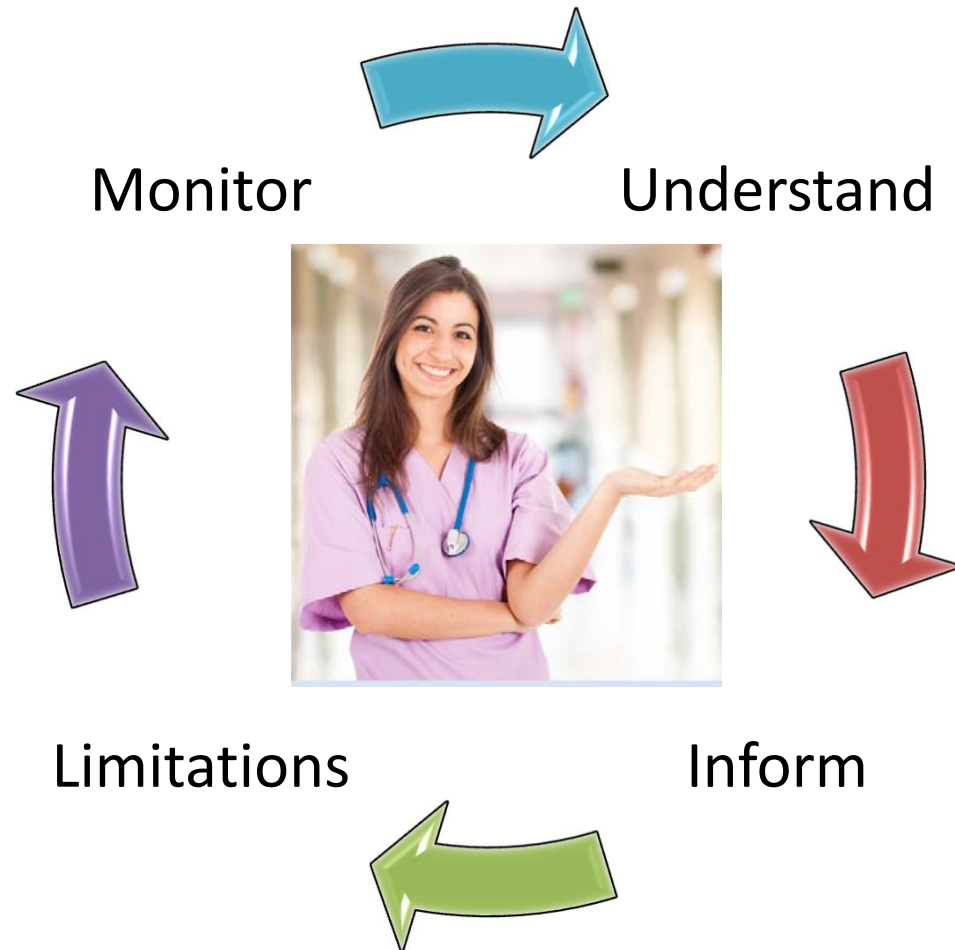
This document is for general informational purposes only.  
It does not represent legal advice nor relied upon as supporting documentation or advice with CMS or other regulatory entities.  
© Pathway Health Services, Inc. – All Rights Reserved – Copy with Permission Only - Requirements of Participation P&P Manual 2017

**LeadingAge**<sup>®</sup>



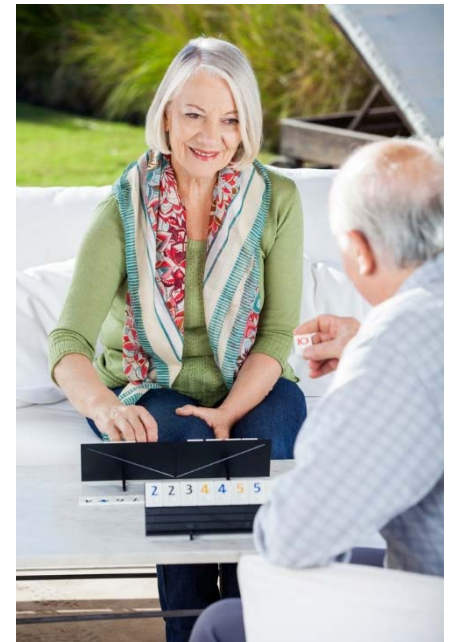
# Facility Response

- Understand
- Inform
- Limitations
- Monitor



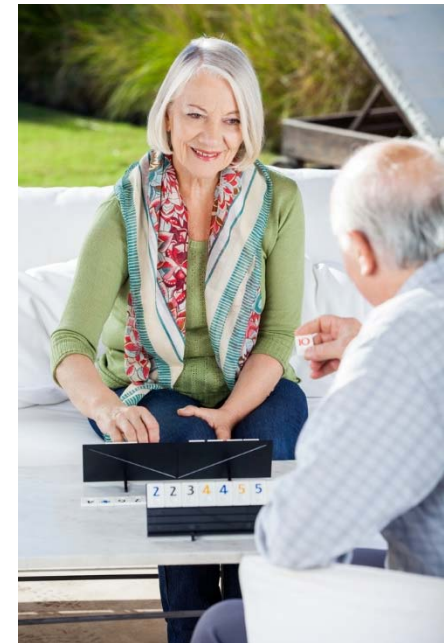
# Understand – Definitions

- Mental Illness or Mental Disorder (serious)
  - Diagnosis
  - Level of Impairment
  - Duration of Illness



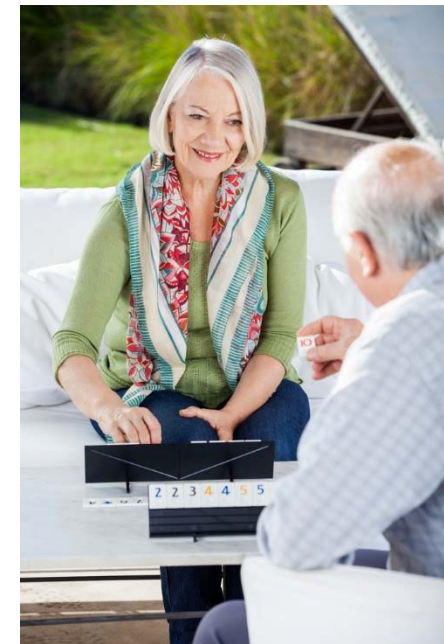
# Understand – Definitions

- Serious Mental Disorder
  - Diagnosis
    - Examples
  - Not primary diagnosis of dementia



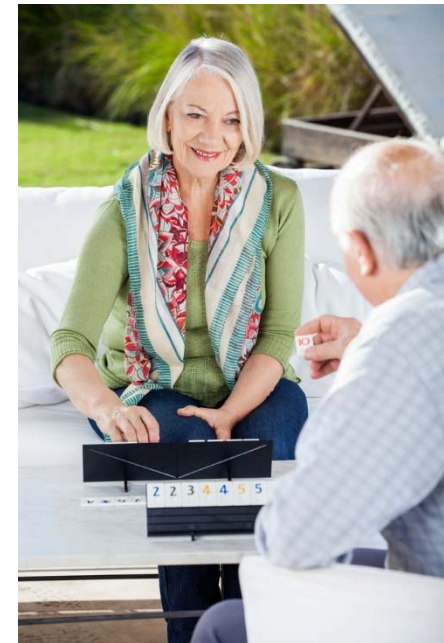
# Understand – Definitions

- Serious Mental Disorder
  - Interpersonal Functioning
  - Concentration, persistence and pace
  - Adaptation to change
- Duration of Illness



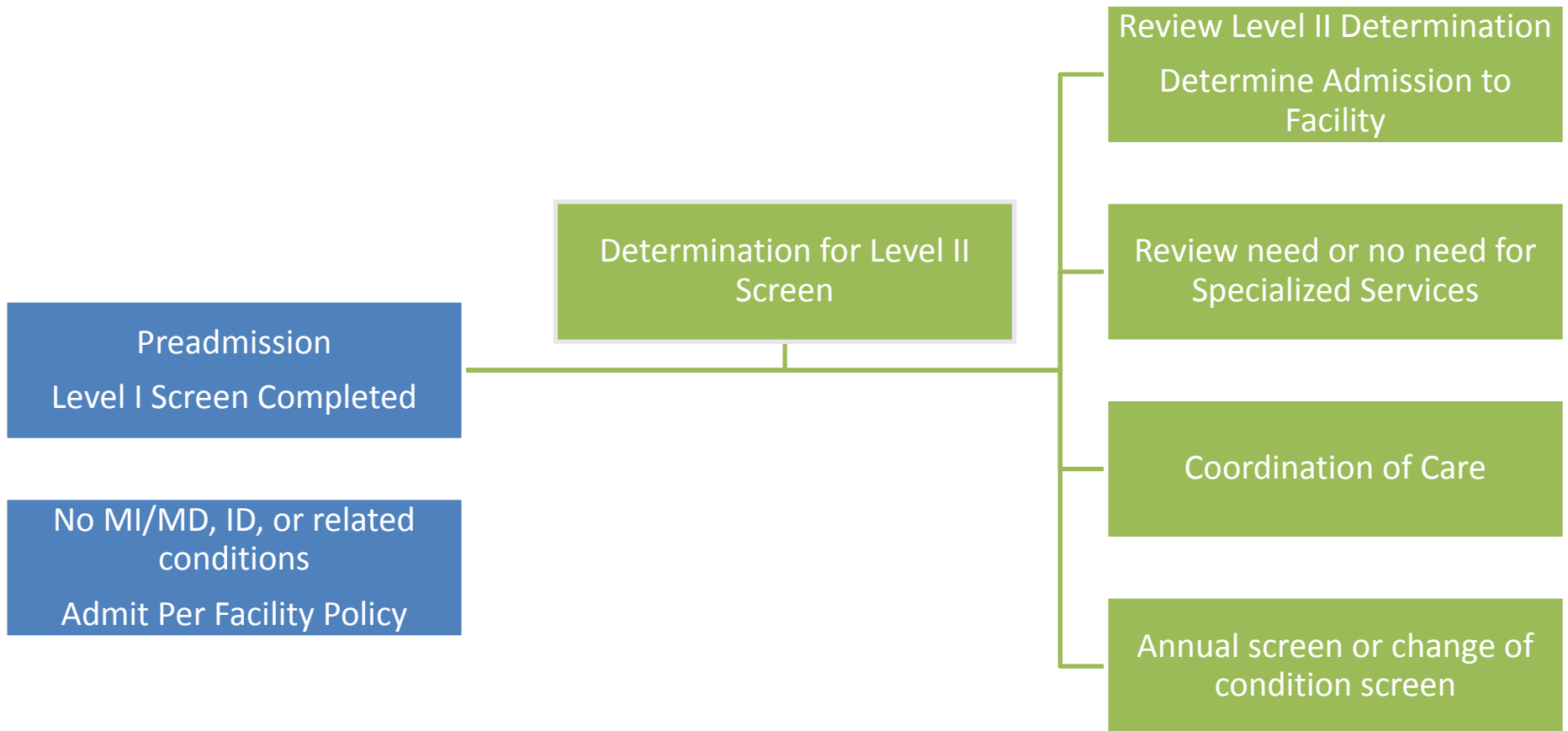
# Understand – Definitions

- Intellectual Disability (ID)
  - MR
- Related Conditions
  - Limitations in 3 or more major life activities



# Inform– PASARR Overview

**Ok to Admit to NF**



# Inform – State Contact and Tools

- ***Effective Date: 1/1/2017***
- **Public Act 099-0857**



This document is for general informational purposes only.  
It does not represent legal advice nor relied upon as supporting documentation or advice with CMS or other regulatory entities.  
© Pathway Health Services, Inc. – All Rights Reserved – Copy with Permission Only - Requirements of Participation P&P Manual 2017



# Inform – Specialized Services

- Different than
  - Activities
  - Restorative
- Qualified personnel
  - QIDP/QMHP
- Internal and External Services





# Limitation or Obstacle

- Inability to meet current needs
- Exacerbation of condition
- Psychiatric/Psychology Services
- Resident Refusal
- Change in Status or Condition
- Facility Response



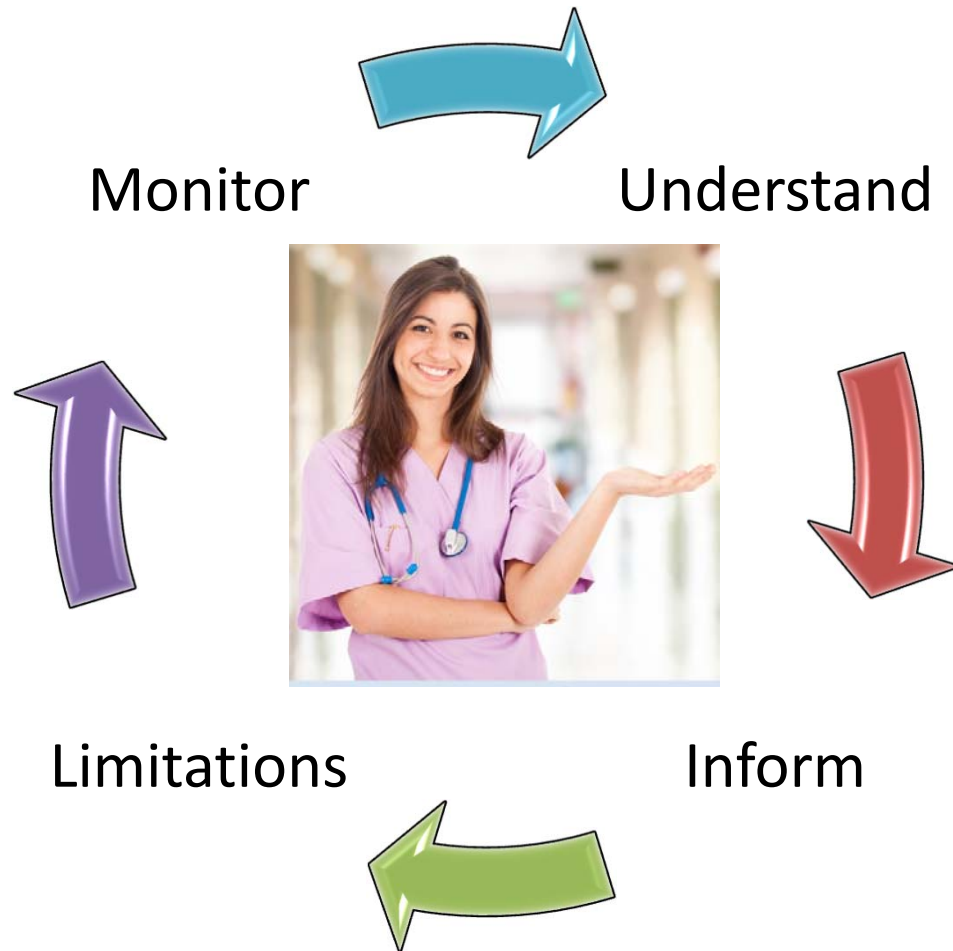
# Monitor

- Admission Process
- Annual PASARR Process
- Resident Interviews
- Resident Council
- Problem/Concern Process
- Observations
- QAPI



# Summary

- Understand
- Inform
- Limitations
- Monitor



# Questions?

## Resources:

- Medicare and Medicaid Programs; Reform of Requirements for Long-Term Care Facilities 10/04/16:

<https://www.federalregister.gov/documents/2016/10/04/2016-23503/medicare-and-medicaid-programs-reform-of-requirements-for-long-term-care-facilities>

- CMS Memo Ref: S&C 17-07-NH: Advance Copy – Revisions to State Operations Manual (SOM), Appendix PP- Revised Regulations and Tags, 11/09/16:

<https://www.cms.gov/Medicare/Provider-Enrollment-and-Certification/SurveyCertificationGenInfo/Downloads/Survey-and-Cert-Letter-17-07.pdf>

- Centers for Medicare and Medicaid Services, HHS Applicability and Definitions 483.102(b)

<https://www.gpo.gov/fdsys/pkg/CFR-2009-title42-vol5/pdf/CFR-2009-title42-vol5-sec483-100.pdf>



This document is for general informational purposes only.  
It does not represent legal advice nor relied upon as supporting documentation or advice with CMS or other regulatory entities.  
© Pathway Health Services, Inc. – All Rights Reserved – Copy with Permission Only - Requirements of Participation P&P Manual 2017



# THANK YOU FOR PARTICIPATING IN THIS EDUCATION SESSION!



This document is for general informational purposes only.  
It does not represent legal advice nor relied upon as supporting documentation or advice with CMS or other regulatory entities.  
© Pathway Health Services, Inc. – All Rights Reserved – Copy with Permission Only - Requirements of Participation P&P Manual 2017

