

Report on Pending LTC Eligibility Crisis

Weekly reporting on Transaction Audit Numbers (“TANs”) HFS is making a strong effort to addressing issues beyond the current crisis by improving transparency. HFS deserves credit. HFS is posting a report of Transaction Authorization Numbers (“TANs”) with current status codes to give a detail level understanding of issues. More transparency is a step in the right direction.

This report includes data through the week of May 17, 2021. There is a one-week lag in data, so this data represents actions through May 14, 2021. An individual TAN may include an application for Medicaid eligibility in addition to the request to approve an LTC admission. The weekly TAN report does not identify which TANs have pending application, but all at least represent a pending LTC admission. The weekly update here will focus only on admissions because of this while any update to the monthly report will include pending applications.

The backlog is at a new lowest point coming off last week – 7.

I am working to re-imagine this report as the current format was conceived when the backlog was in crisis mode. The current charts are not of the same value today as they were then.

I continue to strongly urged you to read both the HFS and DHS postings on the new policy at these links. [Link to Provider Notice](#) & [Link to DHS Policy Manual](#)

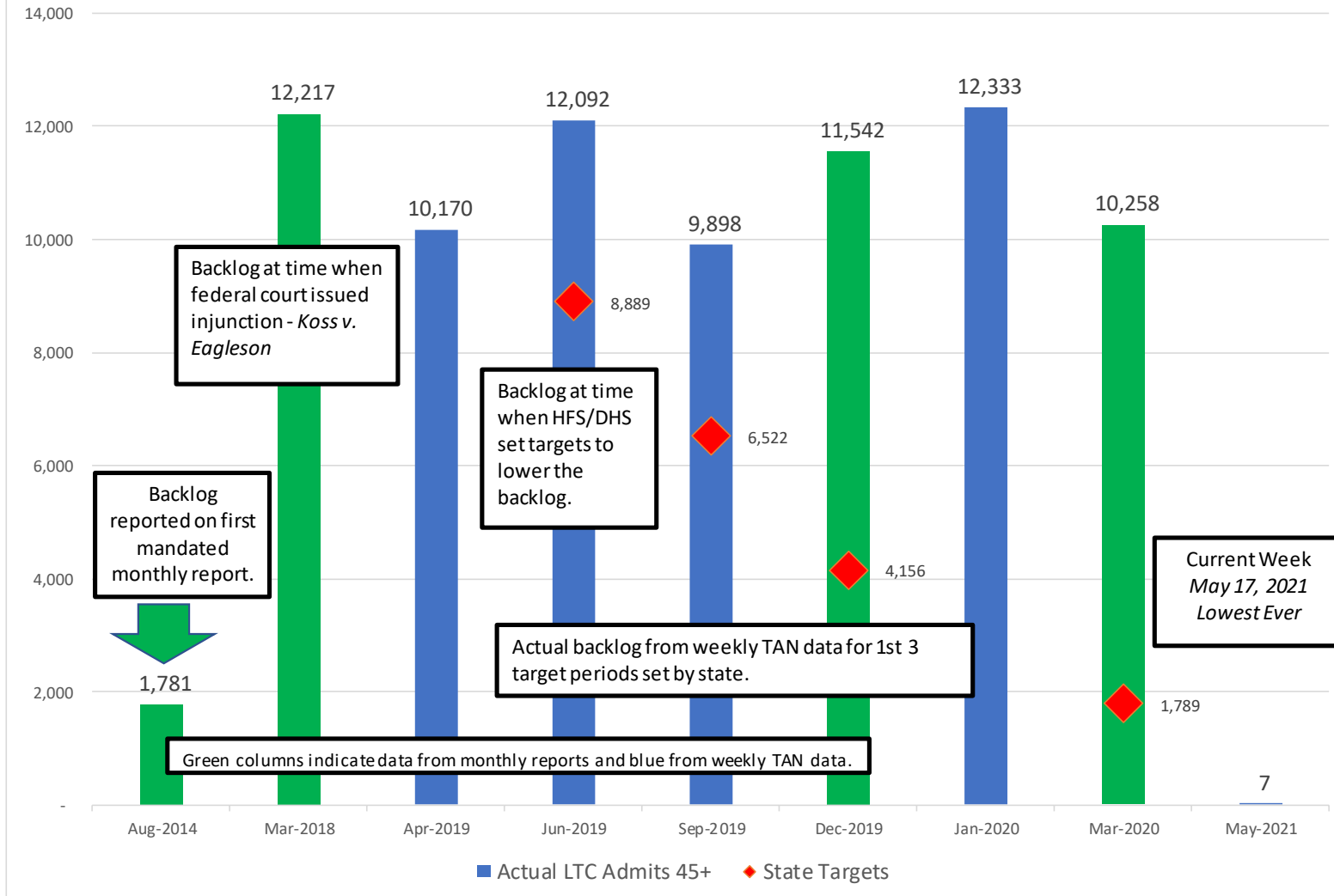


Prepared for:

LeadingAge™
Illinois

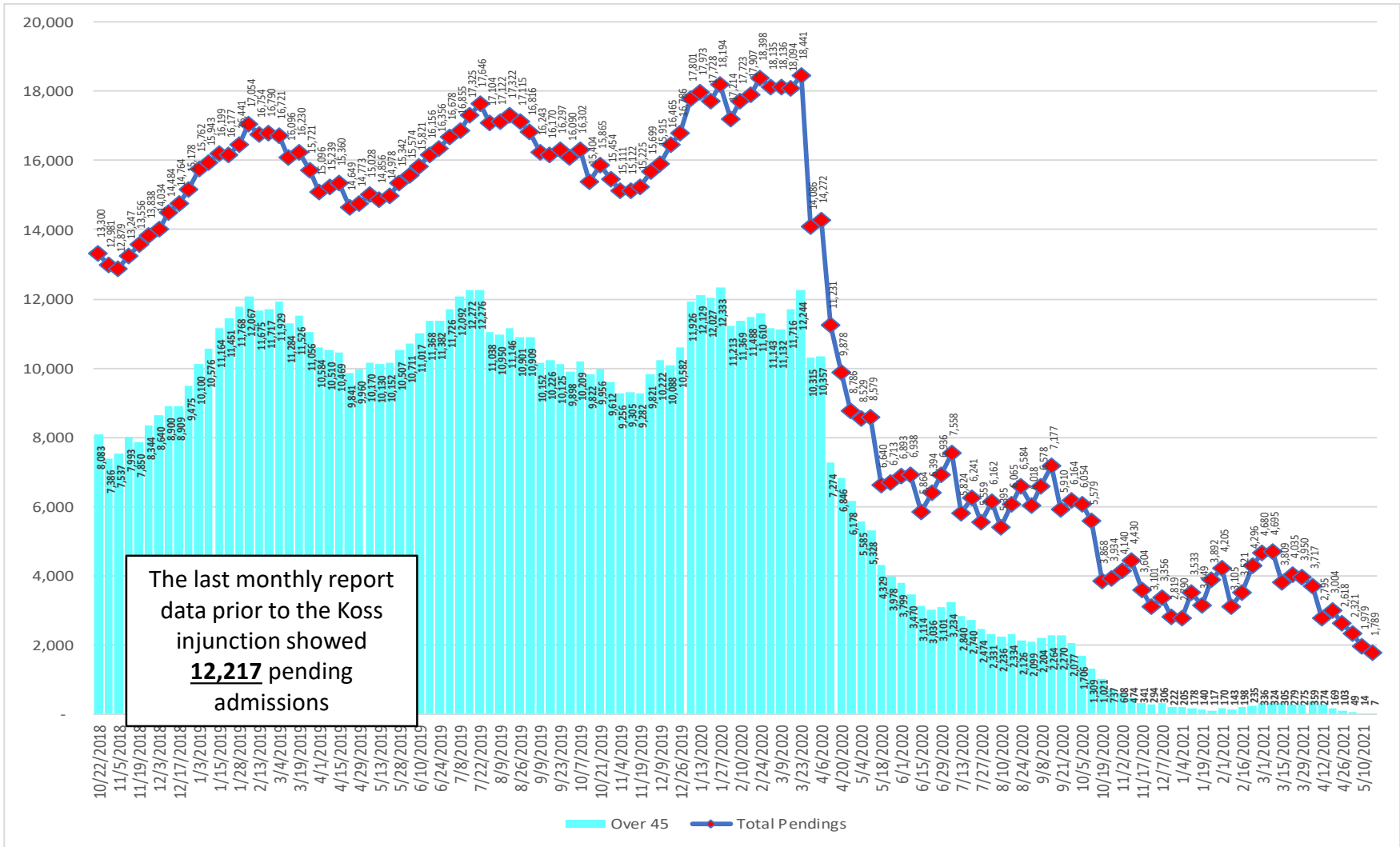
A Brief Timeline of LTC Pending Admission Backlog

Backlog History for LTC admissions over 45 days old



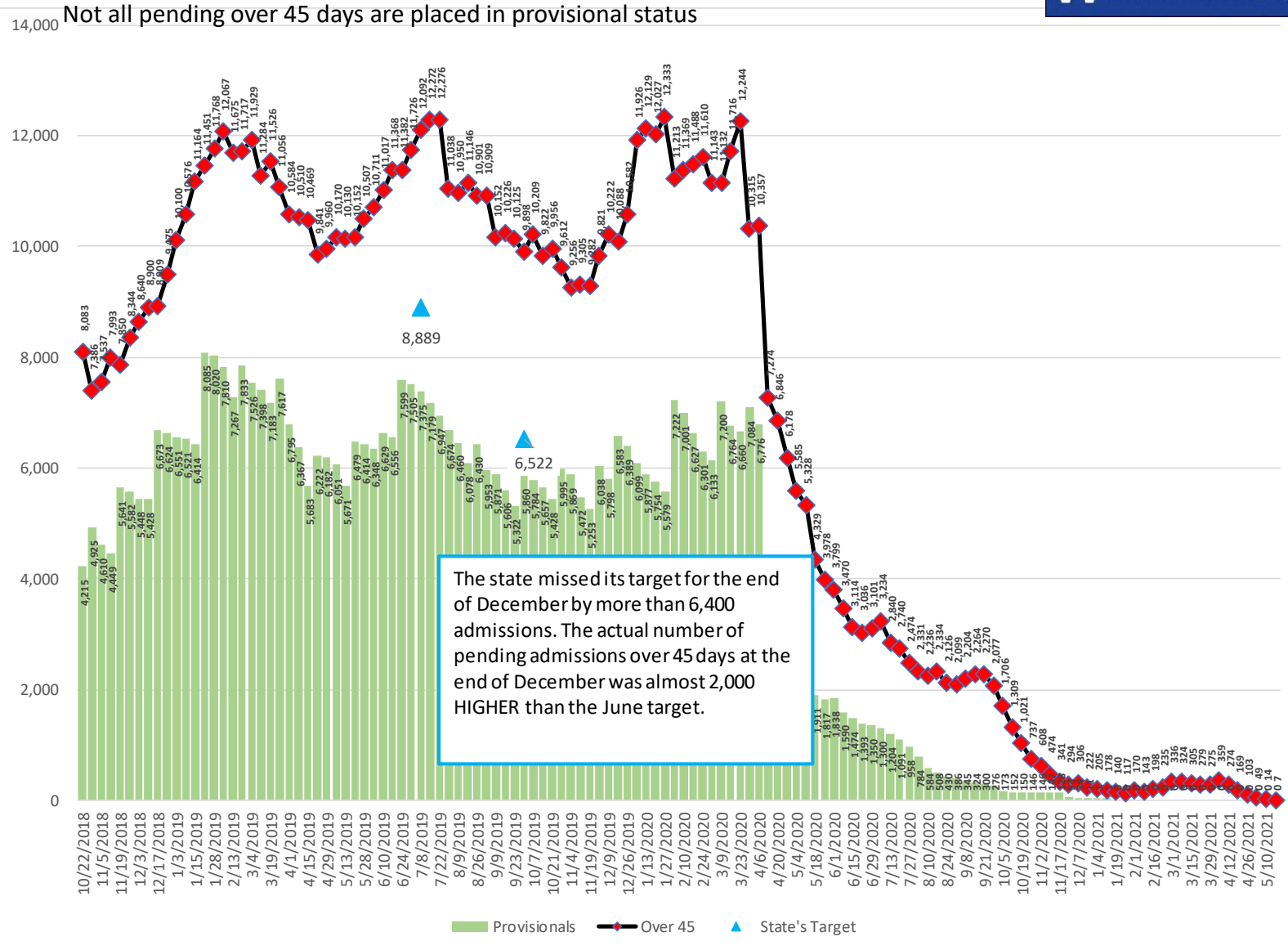
All data is from HFS monthly report & weekly TAN status report

LTC Pending Admissions – Total & Over 45 days



All data is from HFS weekly TAN status report

LTC Pending Admissions – Over 45 days Only



All data is from HFS weekly TAN status report

Weekly TAN Data Summary

Displayed by status and the TAN date year



Data for the week May 10, 2021

Accepted Yes/No	Status Code	Short Description	2015	2016	2017	2018	2019	2020	2021	Total
No	13	Completed - Update made to Admission / admission approved	882	565	197	198	69	14	12	1,937
No	99	Rejected - System Assigned Due to Entry Errors	15,193	10,537	8,837	12,654	9,125	9,743	3,610	69,699
Yes	00	Pending - Initial Status of the Transaction - Not Reviewed							1,948	1,948
Yes	01	Pending - Penalty Period				2	7	1	1	11
Yes	02	Pending - Resource Spend Down			2	1	3	1	4	11
Yes	03	Pending - 30 Day Extension Requested								-
Yes	04	Pending - No Application or Active Case							15	15
Yes	05	Pending - Decertified Home							2	2
Yes	06	Pending - Income Spend Down							1	1
Yes	07	Pending - Discrepancy with Discharge Dates from another Facility							1	1
Yes	08	Pending - Hold on New Admissions								-
Yes	09	Pending - VCL Sent Pending Application							11	11
Yes	10	Rejected - Action Previously Taken or Duplicate Request	1,683	774	766	1,277	2,477	2,366	750	10,093
Yes	11	Completed - Patient Credit Update INVALID for APPLICATION or ADMISSION	56	14	15	8	17	7	1	118
Yes	12	Rejected - By DHS MFO LTC office	3,286	2,887	2,134	5,489	11,798	9,306	3,953	38,853
Yes	13	Completed - Update made to Admission / admission approved	45,602	46,731	47,706	50,691	48,666	43,651	16,058	299,105
Yes	14	Pending - Referral to OIG							2	2
Yes	15	Pending - Admission Systematically Entered with Provisional Eligibility								-
Yes	16	Rejected - System Assigned by HFS		3	25	719	2,081	40	2	2,870
Yes	17	Completed - Admission Approved - 3654 sent				4	998	6,174	1,380	8,556
Yes	99	Rejected - System Assigned Due to Entry Errors	8,620	7,419	8,052	4,394	125	127	80	28,817
			75,322	68,930	67,734	75,437	75,366	71,430	27,831	462,050

All data is from HFS weekly TAN status report

Provisional Eligibility & Age of TANs



TAN Status Code - Pending	0-45 Days	45-75 Days	76-90 Days	91-180 Days	181 - 365 Days	1 -2 Years	Over 2 years	Totals	Over 75 Days w/o PE
00 Pending - Initial Status - Not Reviewed	1,766	5	-	-	-	-	-	1,771	-
03 Pending - 30 Day Extension Requested	-	-	-	-	-	-	-	-	-
04 Pending - No Application or Active Case	8	-	-	-	-	-	-	8	-
05 Pending - Decertified Home	-	-	1	-	-	-	-	-	-
07 Pending - Discrepancy - Discharge Date	1	-	-	-	-	-	-	1	-
08 Pending - Hold on New Admissions	-	-	-	-	-	-	-	-	-
09 Pending - VCL Sent Pending Application	7	-	-	1	-	-	-	8	1
14 Pending - Referral to OIG	-	-	-	-	-	-	-	-	-
15 Pending - Provisional Eligibility	-	-	-	-	-	-	-	-	-
Totals	1,782	5	1	1	-	-	-	1,789	1

HFS has been systematically applying the new policy and approving admissions (status 17) over the last several weeks. However, some TANs are unable to be auto processed by the new programing because of errors with the TAN. Below are three of the top reasons why many of the remaining pending admissions cannot auto load.

- **Incorrect SSN or Recipient Id** – SSN and secondarily recipient id are the data key linking applications, eligibility, and admission data. If this is wrong, the TAN must be manually researched.
- **Multiple TANs entered for the same admission** – The auto processing program kicks these TANs out for manually processing. In some cases, HFS is seeing TANs for admissions that are approved and active on the system. Also, multi-site providers who centrally enter data are not using the correct provider id which again requires manual processing.
- **Providers not entering discharges onto MEDI** – This is a significant problem for SLs. New admits cannot load on top of an open ended one. Again, more manual intervention.

Provisional Eligibility & Age of TANs

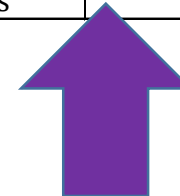


Without adjusting for duplicate TANs that are denied, over 80% of the TANs granted provisional eligibility are approved. This number is likely understated because we are now seeing TANs which were rejected now be approved. Rejected TANs do NOT show up in the pending numbers.

Numbers of residents given Provisional Eligibility (PE)	27,027
Number of residents currently with PE	-
Number of resident who have moved out of PE	27,027
Number moved from PE back to pending	-
Residents with decisions made	27,027
Completed & Approved	21,954
Completed & approved awaiting spenddown	7
Approved %	81%

Rejected TANs APPROVED May 17th Data File

01- Under 45 days	45
02 - 45-90 days	18
03 - 91-180 days	9
04 181- 365 days	9



Of the rejected TANs we are now seeing approved, almost half are 1 year or older...