

COVID-19 LTC Mass Vaccination Plan

December 15, 2020

Illinois LTC 2nd Wave COVID-19 Data as of 12/7/2020

Current Status

- Weekly COVID-19 cases have far outstripped 1st wave of pandemic (now declining)
- Implemented LTC infection control and testing measures are making a difference
- Despite wide community spread, LTC cases represent just 3% of total cases
- However, make up 31% of deaths

Severe illness/death disproportionately affecting older adults

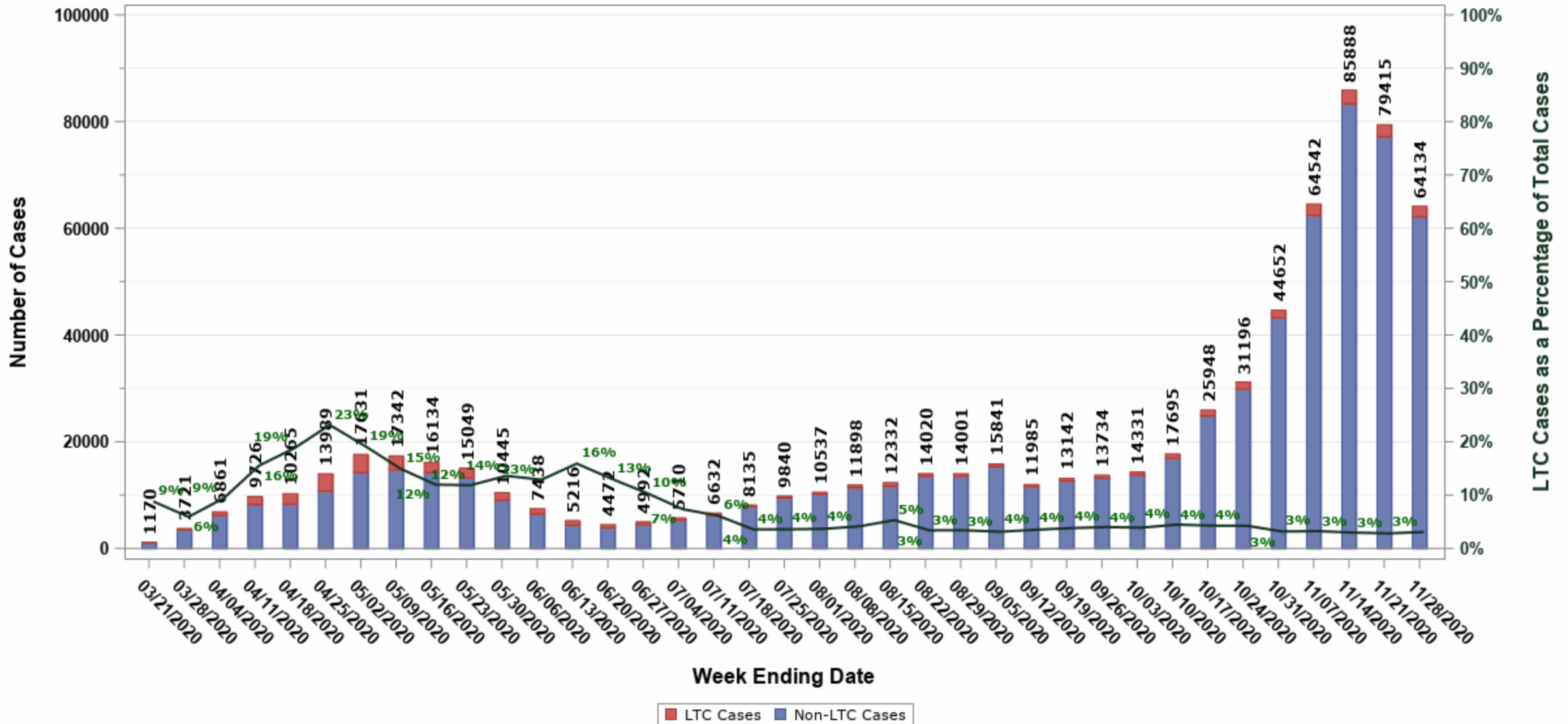
- 80% of cases were age less than 60
- 90% of deaths were age 60+

Case fatality rates by age (deaths/case,%)

- 0 – 59 years – 0.1%
- 60+ non-LTC – 2.8%
- 60+ LTC – 12.0%

Long-term Care Facility* Percent of Total COVID-19 Cases**, by Week

15 March 2020 through 28 November 2020



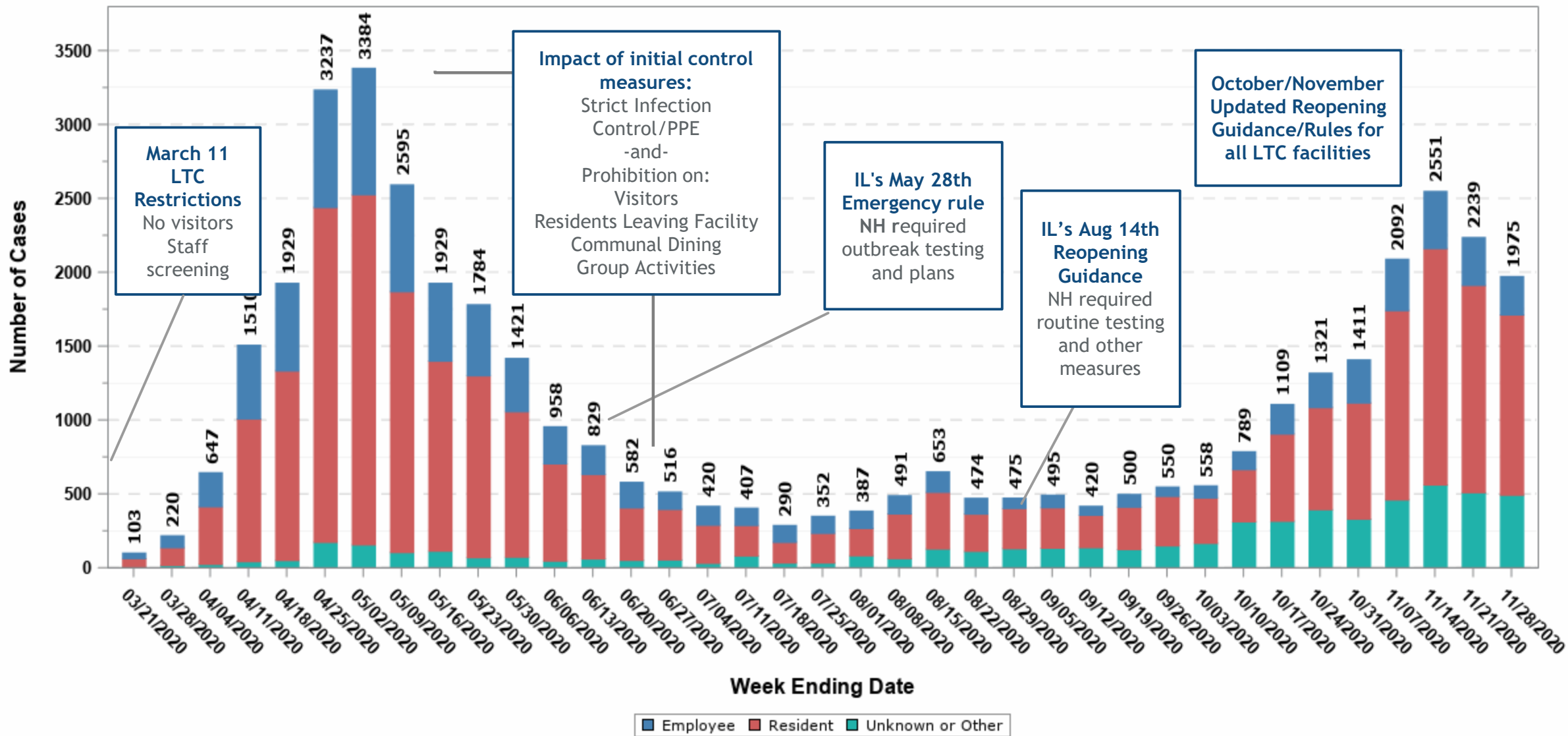
*Facility Type Limited to Skilled Nursing and Assisted Living Categories

**Counts based on case-reported date

CAUTION: Upper limit of y-axis scale may differ from other slides depending on what is being measured (e.g., cases vs. hospitalizations vs. deaths), geographic scope, and/or date range

Long-term Care Facility* COVID-19 Cases**, by Week

15 March 2020 through 28 November 2020



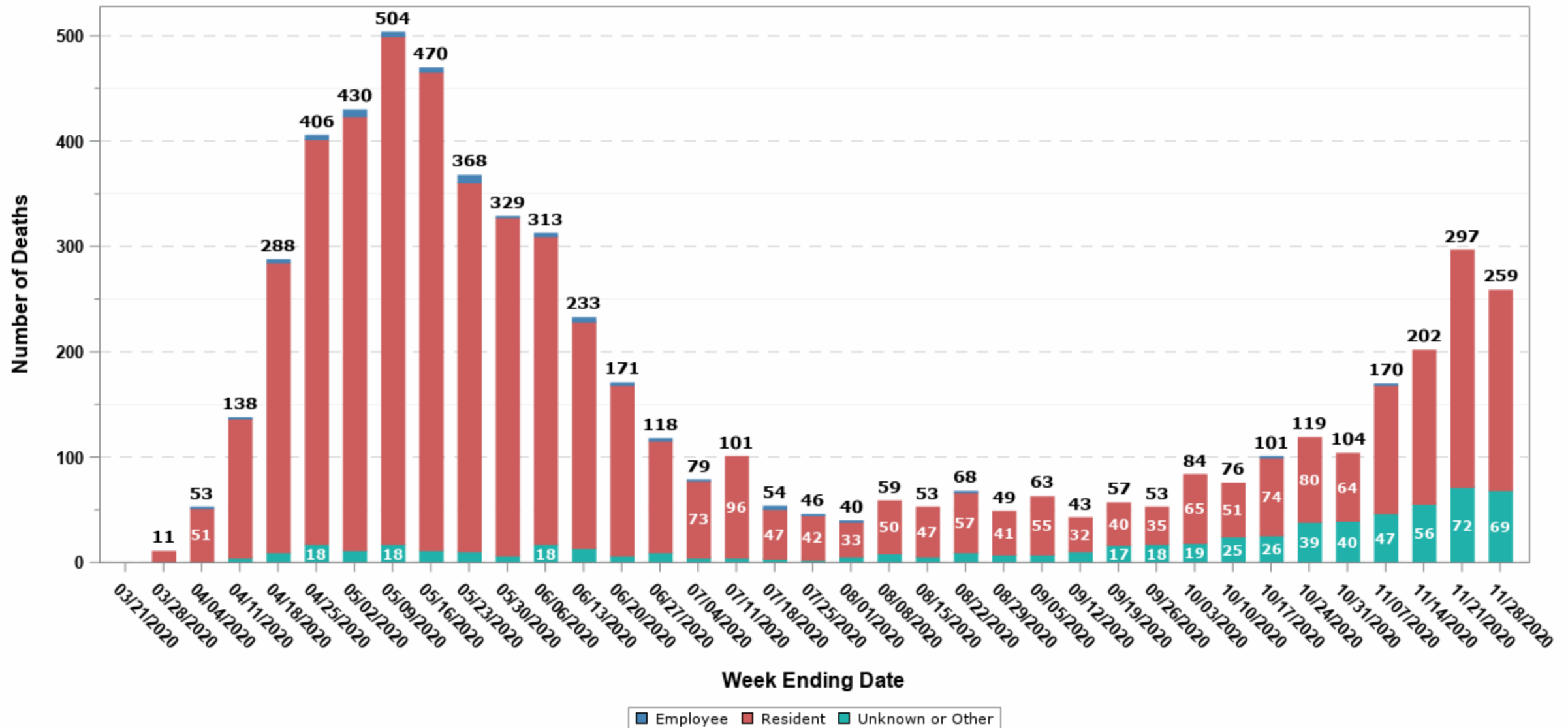
*Facility Type Limited to Skilled Nursing and Assisted Living Categories

**Counts based on case-reported date

CAUTION: Upper limit of y-axis scale may differ among slides depending on what is being measured (e.g., cases vs. hospitalizations vs. deaths), geographic scope, and/or date range

Long-term Care Facility* COVID-19 Deaths**, by Week

15 March 2020 through 28 November 2020

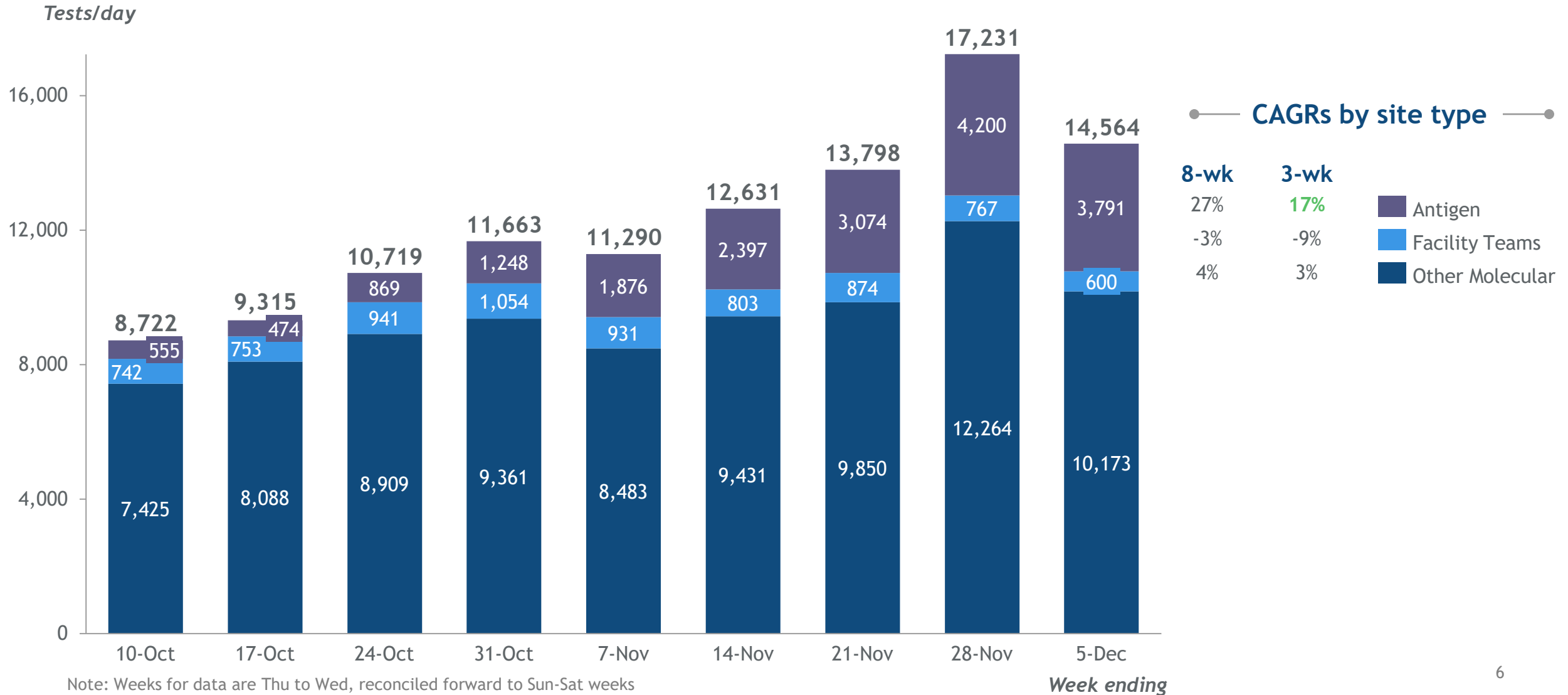


*Facility Type Limited to Skilled Nursing and Assisted Living Categories

**Counts based on death-reported date

CAUTION: Upper limit of y-axis scale may differ among slides depending on what is being measured (e.g., cases vs. hospitalizations vs. deaths), geographic scope, and/or date range

Testing in LTCs reaching record highs due to molecular lab and antigen growth



Note: Weeks for data are Thu to Wed, reconciled forward to Sun-Sat weeks
 Source; ELR, HR Support Data

Illinois Mass Vaccination

IDPH COVID-19 Mass Vaccination Goal

Expectation is to administer vaccine¹ to 80% of the population to achieve herd immunity.

- Illinois population = 12.7 million
- Excluding City of Chicago² = 10 million
- 80% of population = 8 million

¹ May be 2 doses

² Chicago will receive vaccine directly

Critical Populations for Vaccine Allocation



	Limited supply		Increased Supply		
	<p>Health Care Workers & long Term Care Facility Residents.</p> <p>Phase 1a</p> <p>Health Care Personnel: Health care personnel are defined as paid and unpaid persons serving in health care settings who have the potential for direct or indirect exposure to patients or infectious materials.</p> <p>E.g. Clinicians such as physicians, respiratory technicians, dentists & hygienists.</p> <p>Other workers such as EMS, nursing assistants, environmental services, assisted living facility staff, long term care staff, group home care staff & home care givers.</p> <p>Long Term Care Facility Residents: Defined as adults who reside in facilities that provide a variety of services, including medical and personal care, to persons who are unable to live independently.</p>	<p>Essential Frontline Workers.</p> <p>Phase 1b</p> <p>Phase 1b is pending ACIP recommendations, possible groups could include;</p> <p>Essential Frontline workers: Includes those workers who are essential for the functioning of society, such as police, firefighters (including volunteer firefighters), national guard acting in the capacity of a first responder, education sector, food & agriculture (E.g. Meat processing plant), utilities, corrections officers, transportation.</p> <p>*This includes those who must work in person, remote working is still encouraged to ensure vaccine is provided for those most at risk.</p>	<p>Adults with high risk medical conditions.</p> <p>Adults 65+.</p> <p>Phase 1c</p> <p>Phase 1c is pending ACIP recommendations, possible groups could include;</p> <p>Adults with high risk medical conditions: Those adults with high risk medical conditions, such as obesity, diabetes, COPD, Heart Conditions, chronic Kidney conditions, Cancer, Solid Organ Transplant, Sickle Cell Disease, etc.</p> <p>Adults: 65 years of age and older.</p>	<p>All other adults not included in Phase 1. People in other congregate settings not previously mentioned.</p> <p>Phase 2</p> <p>Phase 2 is pending ACIP recommendations, possible groups could include;</p> <p>Workers in industries and occupations important to the functioning of society: People at increased risk of exposure include, workers in restaurants, hotels, entertainment industry, banks, libraries, hair & nail salons, barber shops, exercise facilities, factories or other goods-producing facilities.</p> <p>People with moderate comorbid conditions.</p>	<p>Young adults, children (if a pediatric vaccine is available), and workers in industries and occupations important to the functioning of society and at increased risk of exposure, not included in Phase 1 or 2.</p> <p>Phase 3</p> <p>Phase 3 is pending ACIP recommendations, possible groups could include;</p> <p>Young adults: aged 18-30.</p> <p>Children: Under the age of 18 being included in Phase 3, is dependent upon a pediatric vaccine availability.</p>
Est. Pop. (Excluding Chicago)	586,392	846,477	2,782,734	2,943,516	3,937,698
Chicago Est. Pop.	177,433	248,791	648,010	792,525	1,099,252

Phases may take some time and change as further CDC/ACIP guidance is released.

Four Risk-based Criteria:

1. Risk of acquiring infection
2. Risk of severe disease
3. Risk of negative societal impact
4. Risk of infecting others

Vaccine approval and shipping

Expected State Allocation	Expected Nationwide Allocation	Min Dose Size	Efficacy	EUA Submission	VRBPAC Meeting	EUA Decision & ACIP Window	Vaccine Arrival
Pfizer 109,128 to IL - 23,328 to Chicago	6.2 Million Nationwide (Had expected 15-20 million)	975 (195 Vials)	95%	11/20 (Completed)	12/10 (Completed)	12/11 - 12/14 (Completed)	Week of 12/15 (Underway)
Moderna	2 million (Had expected 15 million)	100 (10 Vials)	94.5%	11/30 (Completed)	12/17 (Expected)	12/18 - 12/21 (Expected)	Week of 12/22 (Expected)

Initial roll-out of vaccine (this week)

50 counties with the highest death rate from COVID -19 are receiving doses.
Vaccine is going to hospitals and healthcare workers in these counties.

Greene	Whiteside	Williamson	Jersey	Winnebago
Wayne	Fayette	Richland	Saline	Kane
Carroll	Marion	Coles	Christian	Randolph
Ford	Monroe	Perry	Iroquois	DuPage
Mason	Cass	Morgan	Saint Clair	Will
Union	Bureau	Knox	Dewitt	Ogle
Pike	Clark	McDonough	Kankakee	Jo Daviess
Clay	Macon	Shelby	Rock Island	Tazewell
Jefferson	Warren	Suburban Cook	Madison	Cumberland
Clinton	La Salle	Jasper	Lake	Stark

CDC LTC Pharmacy Partnership Program for COVID-19 Vaccination



Program Description

- HHS/CDC is partnering with **CVS and Walgreens** to offer on-site COVID-19 vaccination services for residents of nursing homes and assisted living facilities.
- At no cost to facilities, the program provides end-to-end management of the COVID-19 vaccination process, including cold chain management, on-site vaccinations, and fulfillment of reporting requirements.

Pharmacy Partner Responsibilities

(at no charge to facility)

- Schedule and coordinate on-site clinic dates directly with each facility
- Order vaccines and associated supplies
- Ensure cold chain management for vaccine
- Provide on-site administration of vaccine to all residents and any staff not already vaccinated
- Report required vaccination data to the local, state/territorial, and federal jurisdictions within 72 hours of administering each dose
- Adhere to all applicable CMS COVID-19 testing requirements for LTCF staff

Pharmacy Partner Responsibilities

- CDC expects the program services to continue on-site at participating facilities for approximately two months from the date of the first vaccination clinic.
- After the initial phase of vaccinations, facilities may continue working with the federal pharmacy partner it was matched with or shift to another pharmacy provider that is enrolled with the state to provide COVID-19 vaccine

CDC Definition of Eligible LTCFs

- Long-term care facilities are eligible to participate in the Pharmacy Partnership for Long-term Care Program, including:
- Skilled nursing facilities, nursing homes, assisted living facilities (residential long-term care facilities providing assistance and supervision to primarily elderly residents with activities of daily living and skills for independent living), and
- Similar congregate living settings **where most individuals receiving care/supervision are older than 65 years of age.**

CDC Expanded Eligible Entities

- Skilled nursing facilities
- Assisted living facilities
- Continuing care residential communities
- Residential care communities/adult family homes
- HUD 202 low-income senior housing
- Intermediate care facilities for individuals with developmental disabilities
- State-run veterans' homes

Illinois Program

- To begin week of December 28
- Will use the Pfizer vaccine, from the Illinois allocation
- Skilled Nursing Facilities will be 1st, require up to 6 wks to complete
- List of SNFs has been submitted to Walgreens and CVS
- Should receive information from matched pharmacy soon
- Other types of LTC facilities will follow, more information is forthcoming.

Submitted questions

- Q. When should facilities expect the vaccination initiative to be rolled out to LTC facilities? Will it be phased in by region or be implemented statewide?
- A. The CDC LTC PPP will begin the week of December 28 with SNFs and will be state-wide.

Submitted questions

- Q. Some Skilled Nursing Facilities have not heard from one of their Pharmacy partners. Should they be concerned?
- A. No, this is to be expected, the list has just been finalized and submitted to CVS and Walgreens.

Submitted questions

- Q. Who is eligible to receive the COVID-19 Vaccine under the PPP?
- A. All staff, paid and unpaid, and residents are eligible for vaccination under the PPP.

Submitted questions

- Q. Can you explain who is considered a long-term care facility in Phase 1A?
- A. This presentation is about the roll-out of the PPP, and the initial focus will be on SNFs. The plans for other types of LTC facilities will be finalized over the coming weeks and there will be further communication.

Submitted questions

- Q. We understand from CVS that we will not have a choice in the dates of our onsite clinics for the administration of the vaccine.
- A. There is not a choice regarding the scheduling of clinics, and you will need to work with the pharmacy that you are matched with.

Submitted questions

- Q. Where are surveyors in the vaccination schedule?
- A. All state staff who enter nursing homes will be in the priority group 1A and will receive vaccine.

Submitted questions

- Q. Will DPH provide a consent form or will facilities be expected to produce? Will verbal consents be accepted from power of attorneys/representative? If allowed are two witnesses required? If families cannot visit and there are POAs who cannot get to the facility will a verbal consent noted on the form be OK?
- A. Consent forms will be provided by the pharmacies, and they will work directly with the facility on the best approach to obtain consent.

Submitted questions

- Q. If a Resident chooses to opt out of the vaccine initially and does not receive it with the first or second vaccination clinic dates at the community, would there be an opportunity to get the vaccine at a later date if the communities vaccination clinic dates have then passed?
- A. Yes, vaccine will become increasingly available over time and in many locations.

Submitted questions

- Q. Is the vaccine going to be mandated for residents and staff? Will IDPH provide guidelines for residents and/or employees that refuse the Covid-19 vaccine? What happens when staff members refuse to get the vaccine and the facility the staff member works at mandated the vaccination? Do we need a declination form for staff and residents who do not take the vaccine?
- A. No, vaccines will not be mandated at this time. This program is completely voluntary. A declination form not needed.

Submitted questions

- Q. Will a physician's order be required?
- A. Yes, in general, LTC skilled nursing have standing orders on file.

Submitted questions

- Q. Who's going to administer the vaccine (is it a designated staff from Walgreens or CVS)?
- A. Yes, staff from Walgreens or CVS will administer the vaccine.

Submitted questions

- Q. What will have to be charted, will the receipt administered be sufficient provided by the vendor CVS or Walgreens?
- A. Date, lot, brand consent, etc. Same as any other vaccine

Submitted questions

- Q. Will Walgreens and CVS be responsible for completing the data and reporting requirements to NHSN and will they also be responsible for reporting any adverse events reporting to the vaccine adverse event reporting system?
- A. We will look into this and respond in writing.

Submitted questions

- Q. Will there be more clinics schedules in the future for vaccine administration after the initial 3 dates with Walgreens or CVS?
- A. Contact your local health department for the exact plan for your area. After initial phase, other pharmacies will be coming on board so whoever is used regularly can be contacted

Does enrollment in the program guarantee COVID-19 Vaccination

- Enrollment in this program is not an order for vaccine or guarantee of vaccination services.
- Participation in this program simply identifies your facility as willing to receiving vaccine from CVS or Walgreens when vaccine becomes available and if your facility is eligible to receive COVID-19 vaccine under the Advisory Committee on Immunization Practices (ACIP) recommendations.

Reminders

IDPH regularly presents webinars on topics of interest for LTC

- SIREN Registration – in order to receive announcements of the
 - To receive situational awareness from IDPH, please use this link to guide you to the correct registration instructions for your public health related classification:
<http://www.dph.illinois.gov/siren>
- There is a webinar for LTC scheduled for this Friday, December 18 from 1:00 to 2:00 PM