



**COVID-19 Question and Answer Session  
for Long-Term Care and Congregate Residential Settings**

February 5<sup>th</sup>, 2021

# Housekeeping

- All attendees in listen-only mode
- Submit questions via Q&A pod to **All Panelists**
- Slides and recording will be made available later

# Agenda

- Upcoming Webinars
- Vaccination in Long-Term Care Updates
- Essential Caregivers and Compassionate Care
- Leaving Tiered Mitigation
- Long-term Care Guidance for COVID-19
- FAQ From Last Week
- Open Q & A

Slides and recording will be made available after the session.

# IDPH webinars

## Upcoming Friday Brief Updates and Open Q&A 1:00 pm - 2:00 pm

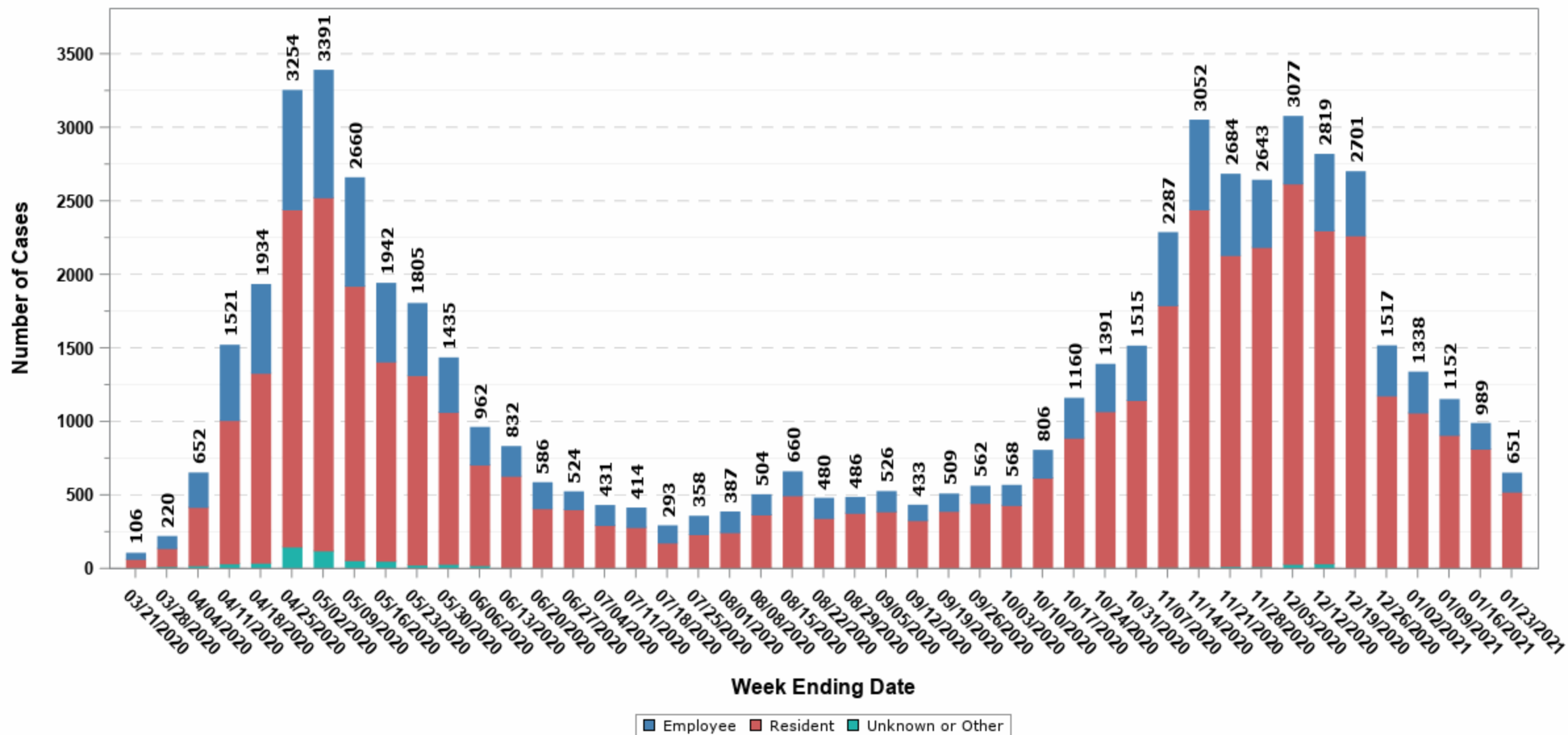
Friday, February 19 <sup>th</sup>	<a href="https://illinois.webex.com/illinois/onstage/g.php?MTID=e8f00a307f6b4e23e4d3927712139fdb5">https://illinois.webex.com/illinois/onstage/g.php?MTID=e8f00a307f6b4e23e4d3927712139fdb5</a>
Friday, February 26 <sup>th</sup>	<a href="https://illinois.webex.com/illinois/onstage/g.php?MTID=edf8ca88f27f379f3108e3d8bf58a9a6d">https://illinois.webex.com/illinois/onstage/g.php?MTID=edf8ca88f27f379f3108e3d8bf58a9a6d</a>

Previously recorded webinars can be viewed on the [IDPH Portal](#)

Slides and recordings will be made available after the sessions.

# Long-term Care Facility\* COVID-19 Cases\*\*, by Week

15 March 2020 through 23 January 2021

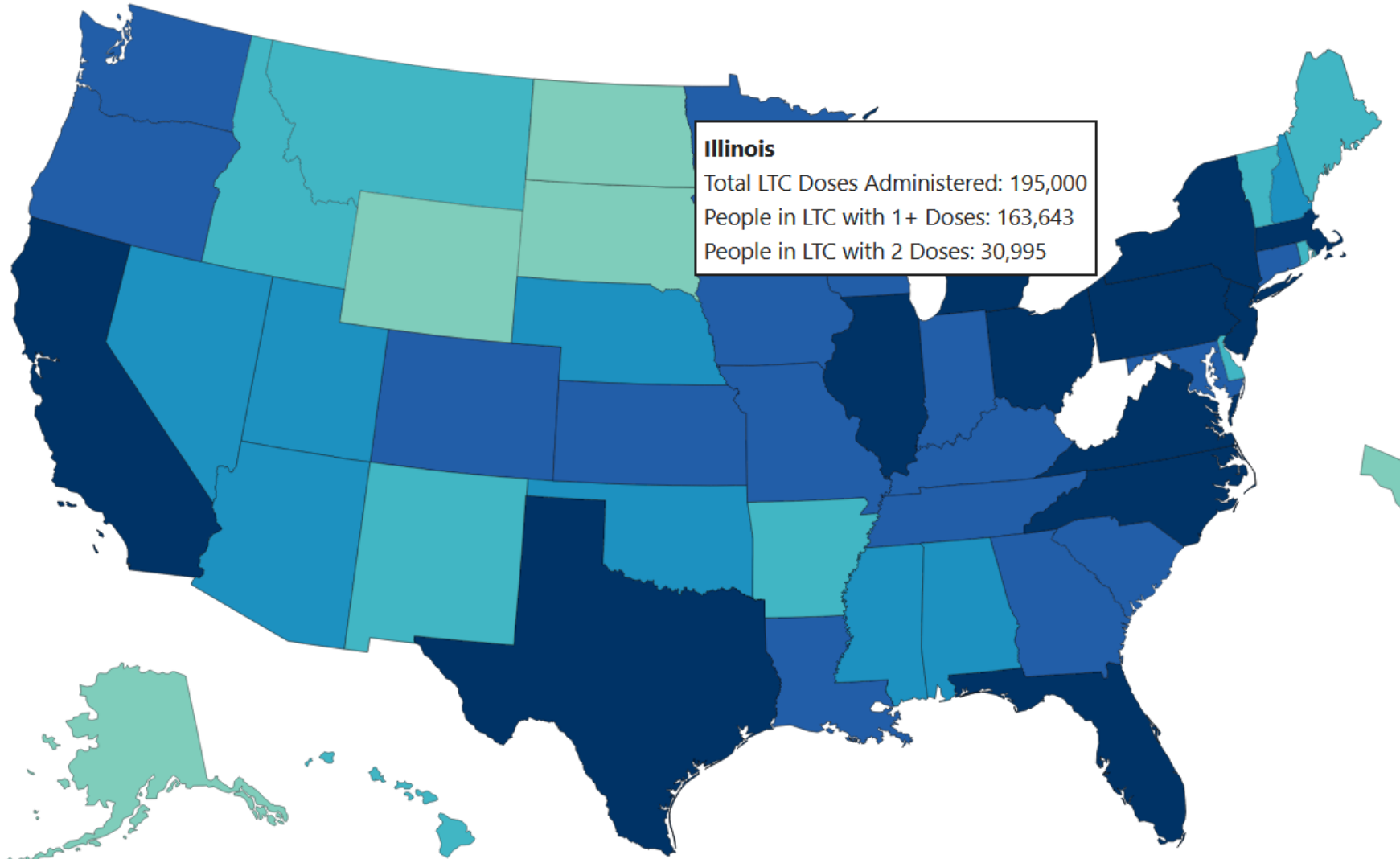


\*Facility Type Limited to Skilled Nursing and Assisted Living Categories

\*\*Counts based on case-reported date

CAUTION: Upper limit of y-axis scale may differ among slides depending on what is being measured (e.g., cases vs. hospitalizations vs. deaths), geographic scope, and/or date range

# Federal Pharmacy Partnership for Long-Term Care (LTC) Program – CDC Data Tracker

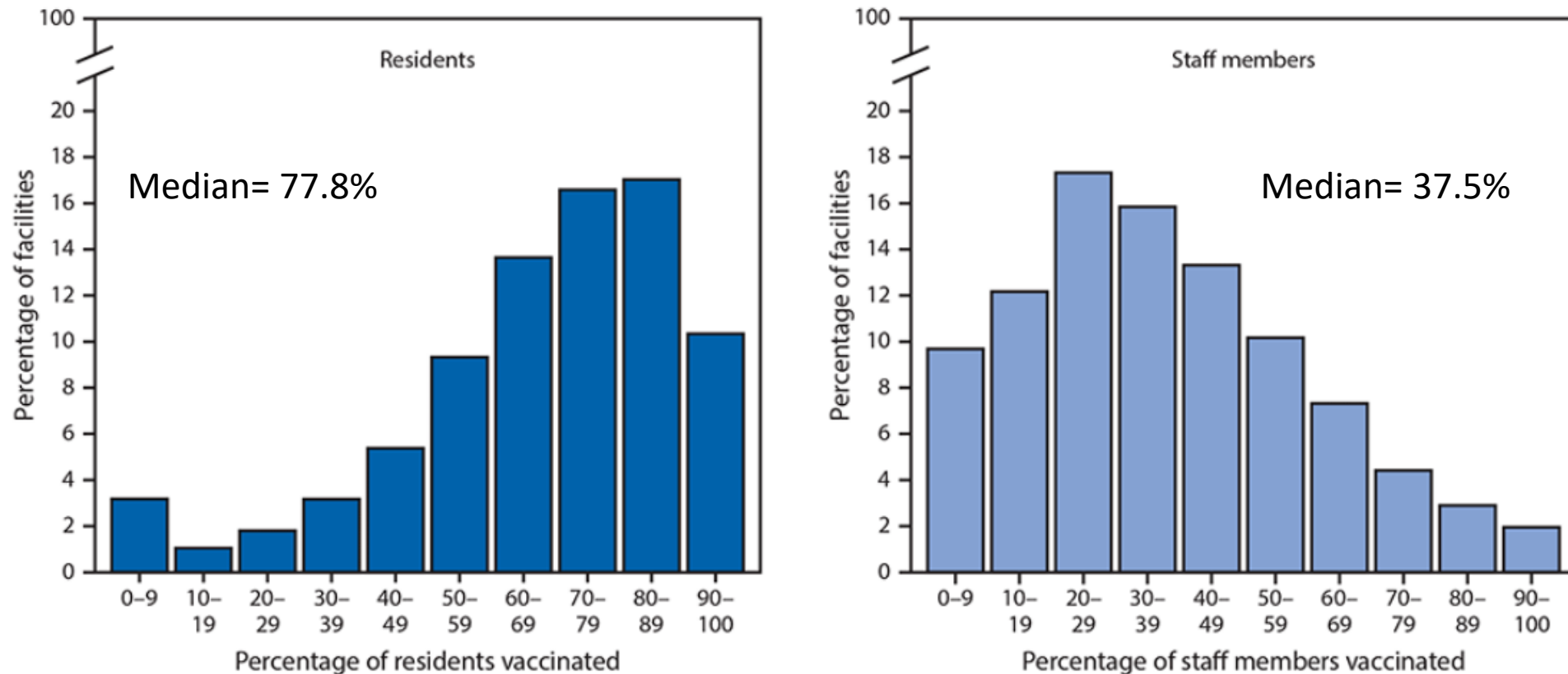


<https://covid.cdc.gov/covid-data-tracker/#vaccinations-ltc>

# CDC Report: First Dose Vaccination Coverage in SNFs Participating in PPP

<http://dx.doi.org/10.15585/mmwr.mm7005e2>

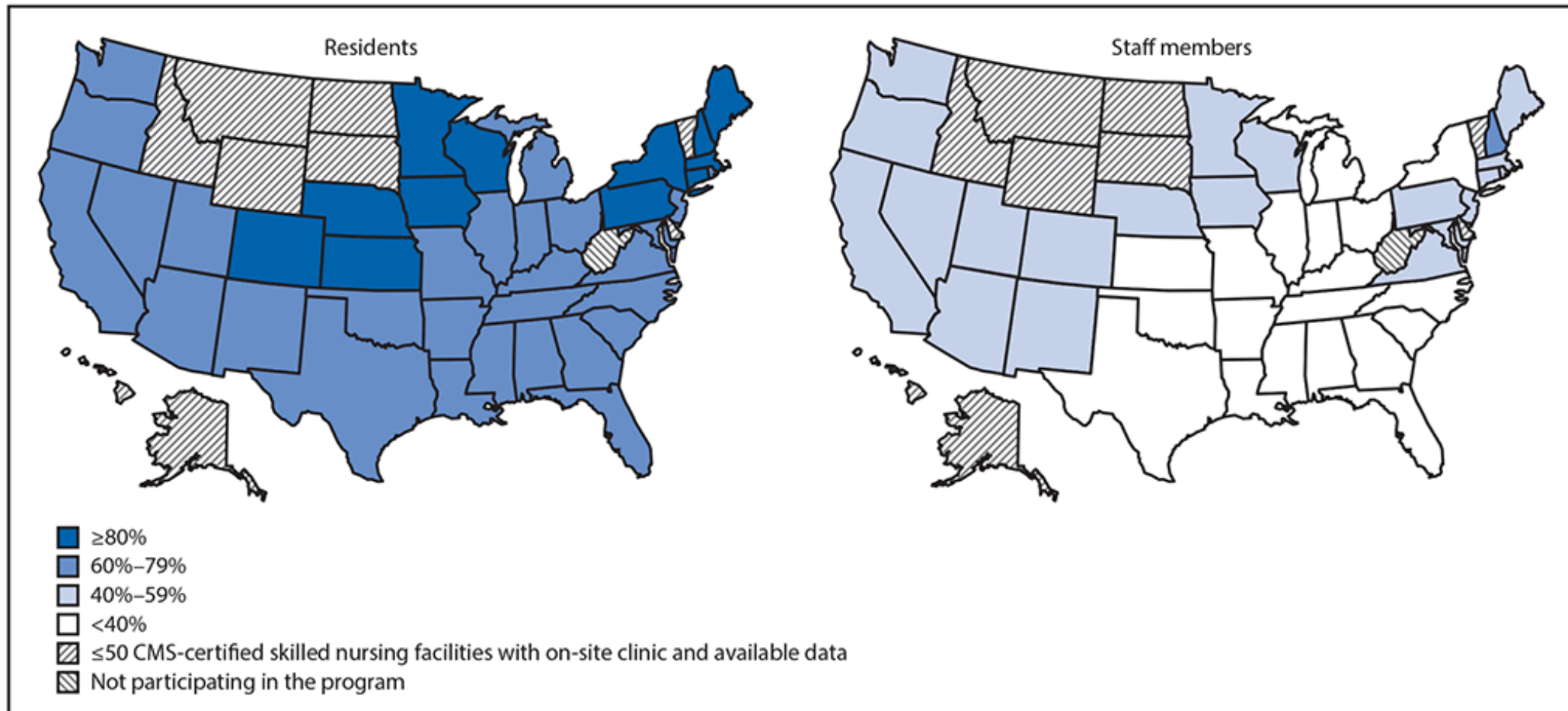
**FIGURE 1. Estimated percentage\* of residents<sup>†</sup> and staff members<sup>§</sup> at skilled nursing facilities<sup>¶</sup> enrolled in the Pharmacy Partnership for Long-Term Care Program who received  $\geq 1$  dose of COVID-19 vaccine — United States, December 18, 2020–January 17, 2021**



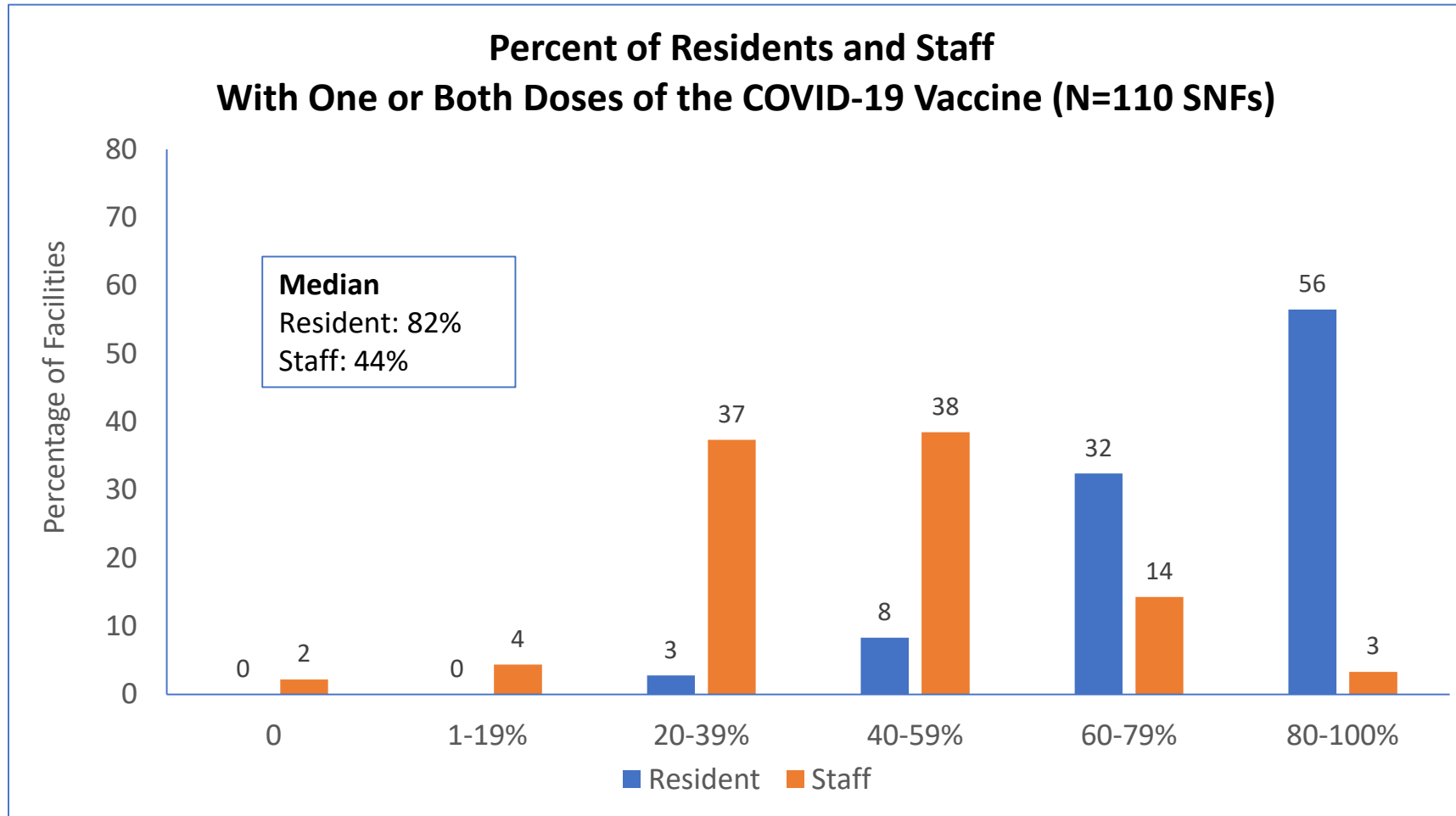
# CDC Report: First Dose Vaccination Coverage in SNFs

## Participating in PPP

FIGURE 2. Estimated median percentage of residents\* and staff members† at skilled nursing facilities§ enrolled in the Pharmacy Partnership for Long-Term Care Program who received  $\geq 1$  dose of COVID-19 vaccine, by jurisdiction¶ — United States, December 18, 2020–January 17, 2021



# NHSN Surveillance for COVID-19 Vaccination as of 2/3/21



# Residents and Staff with other Conditions

	Residents N (%)	Staff N (%)
Medical Contraindication to COVID-19 Vaccine	101 (1%)	59 (1%)
Offered but Declined COVID-19 Vaccine	899 (13%)	2,388 (27%)
Unknown COVID-19 Vaccination Status	63 (1%)	114 (1%)
History of Laboratory-confirmed SARS-CoV-2 Infection	1,789 (25%)	412 (5%)

# Full Effect of COVID-19 Vaccine Takes 14 Days Post Vaccination



Centers for Disease Control and Prevention  
CDC 24/7: Saving Lives, Protecting People™

## EMERGING INFECTIOUS DISEASES®

[EID Journal](#) > [Volume 27](#) > [Early Release](#) > [Main Article](#)

*Disclaimer: Early release articles are not considered as final versions. Any changes will be reflected in the online version in the month the article is officially released.*

Volume 27, Number 4—April 2021

*Dispatch*

### Post-Vaccination COVID-19 among Healthcare Workers, Israel

Sharon Amit✉, Sharon Alexandra Beni, Asaf Biber, Amir Grinberg, Eyal Leshem<sup>1</sup>, and Gili Regev-Yochay<sup>1</sup>

Author affiliation: Authors affiliation: Chaim Sheba Medical Center, Ramat-Gan, Israel

[Suggested citation for this article](#)

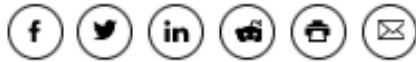
# Vaccine Storage and Handling is Critical: Ohio Example

February 4, 2021

## Shots gone bad: Residents at five facilities must get COVID-19 vaccine again after doses are stored wrong



[Danielle Brown](#)



**McKnight's**  
LONG-TERM CARE NEWS



Leaders at five Ohio long-term and residential care facilities are working with Walgreens and state officials to re-administer COVID-19 vaccines to residents following a storage error caused by the pharmacy retailer.

Ohio Gov. Mike DeWine (R) on Tuesday announced that some residents at the five facilities potentially received ineffective COVID-19 vaccine doses after Walgreens discovered some of the shots had not been stored under the proper cold storage temperatures.

# Essential Caregiver

- Goal
  - Help ensure high-risk residents continue to receive individualized, person-centered care
- Not general visitors
  - Meet an essential need for the resident by assisting with activities of daily living
  - Positively influence the behavior of the resident
- **The plan of care should include services provided by the Essential Caregiver**

# Compassionate Care

- “While end-of-life situations have been used as examples of compassionate care situations, the term “compassionate care situations” does not exclusively refer to end-of-life situations. Examples of other types of compassionate care situations include, but are not limited to:
  - Resident struggling with the change in environment and lack of physical family support
  - Resident grieving after a friend or family member recently passed away
  - Resident who needs cueing and encouragement with eating or drinking
  - Resident experiencing emotional distress, seldom speaking, or crying more frequently” (CMS November 17<sup>th</sup> Nursing Home Visitation - COVID-19)



## **Long Term Care Guidance for COVID-19**

### **Important Reminders**

# Reminders about reducing testing frequency

- Facility must have two consecutive CMS reporting periods at the reduced level to be able to reduce their testing frequency.
- If the level should increase, you must immediately test at the higher frequency per CMS testing frequency.
- Facilities must test according to their LHD recommendations should those recommendation be more stringent than CMS requirements.

# Tiered Mitigation has been Lifted!!

## Illinois Regional COVID-19 Resurgence Criteria

IDPH is monitoring key indicators to identify early but significant increases of COVID-19 transmission in Illinois, potentially signifying resurgence. These indicators are calculated for the 11 Illinois COVID-19 regions. IDPH will monitor if these indicators show an increase in the COVID-19 disease burden with a simultaneous decrease in hospital capacity. These indicators can be used to determine whether additional community mitigation interventions are needed for a region to control the further spread of COVID-19.

Indicators are calculated daily for each region based on the most current, complete data. Each indicator is compared to a pre-established threshold criteria to evaluate the COVID-19 disease burden and hospital resource capacity. By applying the same metrics to each region, IDPH uses a standardized approach to monitor the state as a whole while also monitoring regional trends.

All Regions are in [Phase 4](#)

<https://www.dph.illinois.gov/regionmetrics?regionID=1>

Region	Current Phase	Counties
Region 1	Phase 4	Jo Davies, Stephenson, Winnebago, Boone, Dekalb, Carrol, Ogle, Whiteside, Lee, Crawford
Region 2	Phase 4	Rock Island, Henry, Bureau, Putnam, Kendall, Grundy, Mercer, Knox, Henderson, Warren, McDonough, Fulton, Stark, Marshall, Peoria, Tazwell, McLean, Woodford, Livingston, Lasalle
Region 3	Phase 4	Hancock, Adams, Pike, Calhoun, Jersey, Greene, Scott, Brown, Schuyler, Cass, Morgan, Macoupin, Montgomery, Christian, Sangamon, Logan, Menard, Mason
Region 4	Phase 4	Bond, Madison, St. Clair, Clinton, Washington, Monroe, Randolph
Region 5	Phase 4	Marion, Jefferson, Wayne, Edwards, Wabash, Perry, Jackson, Franklin, Williamson, Saline, Hamilton, White, Gallatin, Union, Johnson, Pope, Hardin, Alexander, Massac, Pulaski
Region 6	Phase 4	Iroquois, Ford, Dewitt, Piatt, Champaign, Vermillion, Macon, Moultrie, Douglas, Edgar, Shelby, Coles, Cumberland, Clark, Fayette, Effingham, Jasper, Crawford, Clay, Richland, Lawrence
Region 7	Phase 4	Will, Kankakee
Region 8	Phase 4	Kane, Dupage
Region 9	Phase 4	McHenry, Lake
Region 10	Phase 4	Cook
Region 11	Phase 4	Chicago

<https://coronavirus.illinois.gov/s/restore-illinois-regional-dashboard>

# When does the 14-day waiting period begin?

## *This time.....*

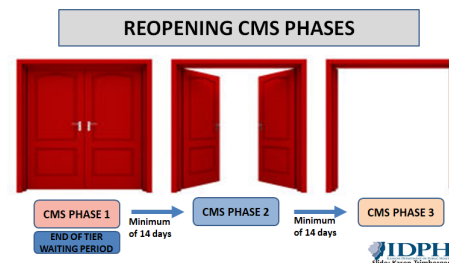
IL Region	Date Tier 3 lifted and started 14-day calendar	Date 14-day waiting period ends (started when tier 3 lifted)	Date Able to resume CMS Phase facility was in before mitigation
	<b>DAY ZERO</b>	<b>DAY 14</b>	<b>DAY to Resume</b>
Region 1	1/15/2021	01/29/21	01/30/21
Region 2	1/15/2021	01/29/21	01/30/21
Region 3	1/18/2021	02/01/21	02/02/21
Region 4	1/23/2021	02/06/21	02/07/21
Region 5	1/15/2021	01/29/21	01/30/21
Region 6	1/18/2021	02/01/21	02/02/21
Region 7	1/21/2021	02/04/21	02/05/21
Region 8	1/18/2021	02/01/21	02/02/21
Region 9	1/18/2021	02/01/21	02/02/21
Region 10	1/18/2021	02/01/21	02/02/21
Region 11	1/18/2021	02/01/21	02/02/21

## *Moving Forward.....*

- If additional tiered mitigation is imposed upon IL Regions, the 14-day waiting period to resume CMS Phases will NOT start  
**UNTIL ALL TIERED MITIGATION STRATEGIES HAVE BEEN LIFTED**
- IDPH will use the date the Region enters IL Phase 4 as day “0” and count forward 14 days to calculate the date the facility can resume the CMS Phase they were in before tiered mitigation was put in place.

# Illinois Phase 4: Revitalization

- Term used to reflect the reopening of the state in general....NOT specifically used for LTCF!
- CMS Phases for LTCFs *appear* to lag behind the state levels of reopening but it's because...
- CMS Phase 3 is as open as you will get!
- In CMS Phase 3, LTCF activities are again taking place with social distancing, mask wearing, hand hygiene, etc.



# Start Where You Were!!

- LTCFs in IL Phase 4 MUST use the CMS Phase framework of reopening
- **All facilities in IL Phase 4 may not be in CMS Phase 3**
  - Where was your facility when you “froze” back in November? (tiered mitigation implemented)
  - Are you currently in outbreak? If so, you are in CMS Phase 1.
- You can RESUME where you were but, you do NOT get to advance to CMS Phase 3 if you weren’t there before the tiers were implemented.
- You must advance through the CMS Phases per LTC Reopening Guidance.
  - Meet eligibility requirements
  - Complete RedCap Attestation form online
  - Notify LHD of plan to advance

Updated IDPH recommendation:

# Quarantine

- ☐ Residents within the 90-day window (post recovery) do not need to be quarantined upon return unless the resident is exhibiting symptoms of COVID or have been out of the building > 24 hours (overnight stays with family or hospitalizations).
  
- ☐ A risk assessment can be used to guide decision-making on quarantine for those residents who:
  - Have never had COVID (COVID naïve),
  - Are > 90 days post recovery, or
  - For those residents who are immunocompromised and frequently leave the building for appointments.  
([http://dph.illinois.gov/sites/default/files/COVID19 LTC FacilityRiskAssessment.pdf](http://dph.illinois.gov/sites/default/files/COVID19_LTC_FacilityRiskAssessment.pdf))
  
- ☐ Any resident that has been out of the building for > 24 hours should be placed into quarantine regardless of risk assessment score even those residents who are within the 90-day window of COVID

\*\*\*AT THIS TIME, VACCINATION STATUS DOES NOT CHANGE THE CURRENT GUIDANCE FOR QUARANTINE

# FAQ From Last Week

- Q: We have already had 2 of our 3 vaccine clinics with Walgreens. Should new admissions participate in the 3rd and final vaccine clinic? How do they get their second vaccination? Is one vaccine better than none?
- Q: If someone hasn't work in your building for a week and tests positive for COVID, do we report them as a positive? I can't recall the time frame for last day worked and reporting completion.

# Open Q&A

Submit questions via Q&A pod to **All Panelists**

**Please do not resubmit a single question multiple times**

Slides and recording will be made available after the session.

# Reminders

- SIREN Registration
  - To receive situational awareness from IDPH, please use this link to guide you to the correct registration instructions for your public health related classification: <http://www.dph.illinois.gov/siren>
- NHSN Assistance:
  - Contact Telligen: **nursinghome@telligen.com**