

JB Pritzker, Governor

Ngozi O. Ezike, MD, Director

UPDATED Recommended Guidance for requesting PPE during COVID-19 response

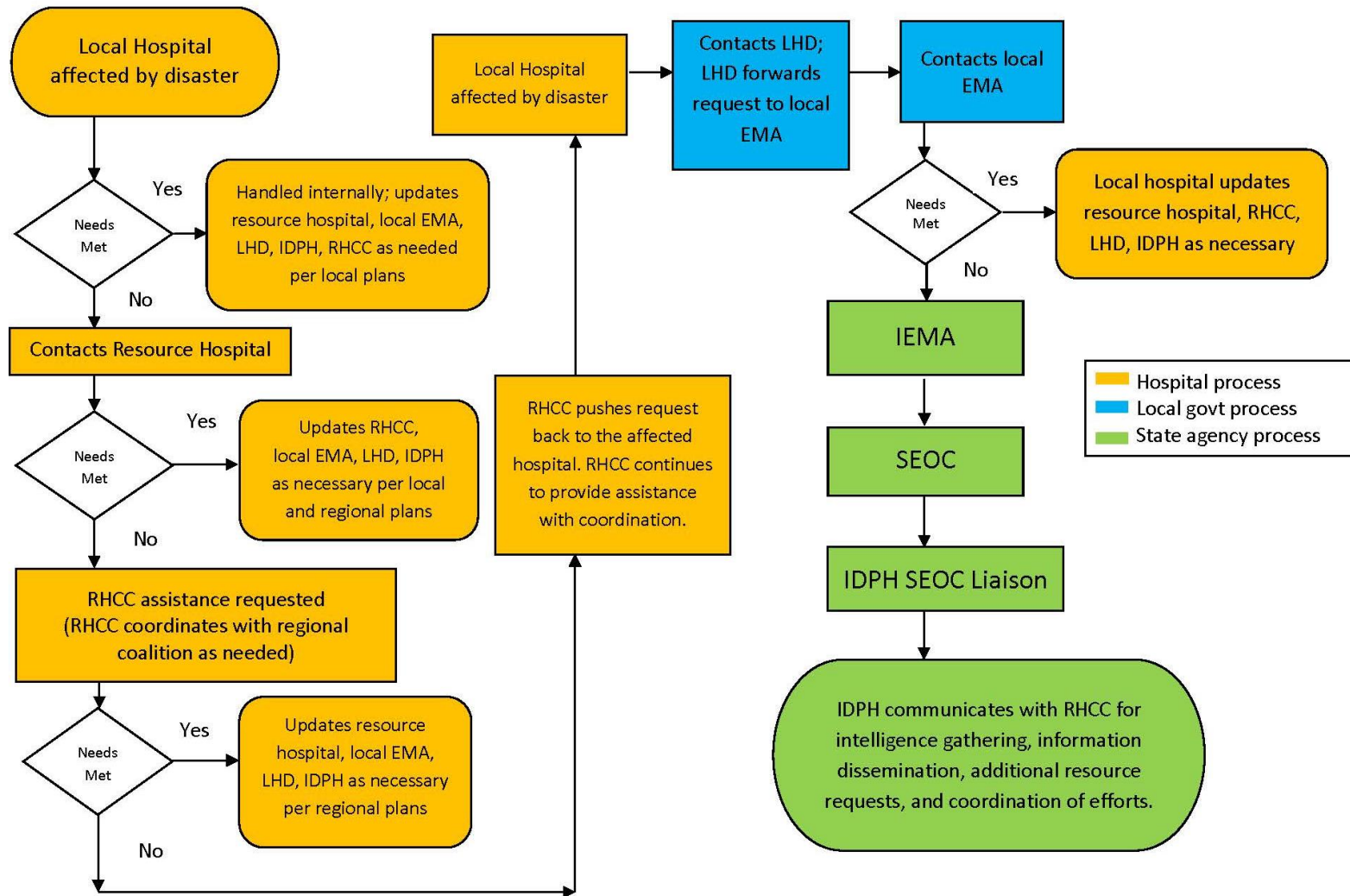
This guidance provides updated recommendations for PPE requests related to the COVID-19 response.

1. **Hospitals:**
 - a. **Do not enter PPE requests in IMATS.**
 - b. Please refer to Attachment 8 from the Illinois Department of Public Health ESF-8 Plan
2. **Local Health Departments:**
 - a. **Do not enter PPE requests in IMATS.**
 - b. Please refer to Attachment 10 from the Illinois Department of Public Health ESF-8 Plan
3. **Long-Term Care Facilities:**
 - a. Notify the LHD that PPE is needed.
 - b. If no resources exist, LHD requests via resource request process
4. **Healthcare coalition members other than hospitals, LHDs, and LTCs:**
 - a. Work with the LHD and RHCC and in your region for resource requests.
5. **Law enforcement, ILEAS, fire, police, all other non-medical first responders:**
 - a. Notify the local EMA that PPE is needed.
 - b. Local EMA requests resources via resource request process

Please continue to attempt procurement of PPE through your local supply chain or vendor.

Attachment 8

Hospital Disaster Resource Request Flowchart (Request for Medical Resources)



Local Health Department Resource Request Flowchart

